

For Research Use Only

GOLGA5 Recombinant antibody, PBS Only (Capture/Detector)

Catalog Number: 83839-2-PBS



Basic Information

Catalog Number:

83839-2-PBS

Size:

1 mg/ml

Source:

Rabbit

Isotype:

IgG

Immunogen Catalog Number:

AG35031

GenBank Accession Number:

BC023021

GeneID (NCBI):

9950

UNIPROT ID:

Q8TBA6

Full Name:

golgi autoantigen, golgin subfamily a, 5

Calculated MW:

83 kDa

Observed MW:

80-95 kDa

Purification Method:

Protein A purification

CloneNo.:

240893F6

Applications

Tested Applications:

WB, IHC, Cytometric bead array, Indirect ELISA

Species Specificity:

human

Background Information

GOLGA5 (Golgin subfamily A member 5) maintains Golgi structure, and stimulates the formation of Golgi stacks and ribbons. Also, it is involved in intra-Golgi retrograde transport (PMID: 12538640; 15718469).

Storage

Storage:

Store at -80°C.

The product is shipped with ice packs. Upon receipt, store it immediately at -80°C

Storage Buffer:

PBS Only

For technical support and original validation data for this product please contact:

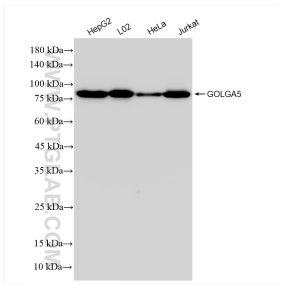
T: 4006900926

E: Proteintech-CN@ptglab.com

W: ptgcn.com

This product is exclusively available under Proteintech Group brand and is not available to purchase from any other manufacturer.

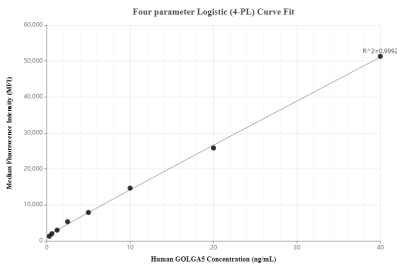
Selected Validation Data



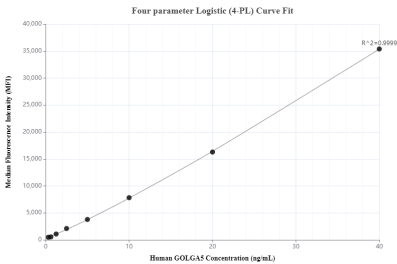
Various lysates were subjected to SDS PAGE followed by western blot with 83839-2-RR (GOLGA5 antibody) at dilution of 1:10000 incubated at room temperature for 1.5 hours. This data was developed using the same antibody clone with 83839-2-PBS in a different storage buffer formulation.



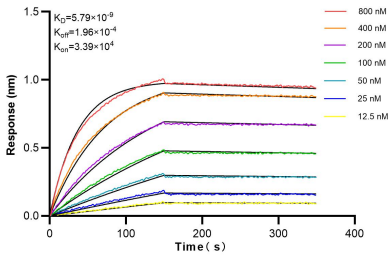
Immunohistochemical analysis of paraffin-embedded human ovary cancer tissue slide using 83839-2-RR (GOLGA5 antibody) at dilution of 1:1000 (under 20x lens). Heat mediated antigen retrieval with Tris-EDTA buffer (pH 9.0). This data was developed using the same antibody clone with 83839-2-PBS in a different storage buffer formulation.



Cytometric bead array standard curve of MP00813-2, GOLGA5 Recombinant Matched Antibody Pair, PBS Only. Capture antibody: 83839-2-PBS. Detection antibody: 83839-2-PBS. Standard: Ag35031. Range: 0.313-40 ng/mL



Cytometric bead array standard curve of MP00813-3, GOLGA5 Recombinant Matched Antibody Pair, PBS Only. Capture antibody: 83839-5-PBS. Detection antibody: 83839-2-PBS. Standard: Ag35031. Range: 0.313-40 ng/mL



Bioluminescence resonance energy transfer (BRET) kinetic assays of 83839-2-RR against Human GOLGA5 were performed. The affinity constant is 5.79 nM.