

For Research Use Only

Fibrillin 1 Recombinant antibody, PBS Only

Catalog Number: 83836-4-PBS



Basic Information

Catalog Number: 83836-4-PBS	GenBank Accession Number: BC146854	Purification Method: Protein A purification
Concentration: 1 mg/ml	GeneID (NCBI): 2200	CloneNo.: 240960G12
Source: Rabbit	UNIPROT ID: P35555	
Isotype: IgG	Full Name: fibrillin 1	
Immunogen Catalog Number: AG30283	Observed MW: 350 kDa	

Applications

Tested Applications:
WB, IHC, ELISA

Species Specificity:
human

Background Information

Fibrillin-1 belongs to the fibrillin family. Fibrillins are structural components of 10-12 nm extracellular calcium-binding microfibrils, which occur either in association with elastin or in elastin-free bundles. Fibrillin-1-containing microfibrils provide long-term force bearing structural support. Defects in Fibrillin-1 are a cause of Marfan syndrome (MFS), isolated ectopia lentis (EL), Weill-Marchesani syndrome autosomal dominant (ADWMS), Shprintzen-Goldberg craniosynostosis syndrome (SGS) or MASS syndrome.

Storage

Storage:
Store at -80°C.
The product is shipped with ice packs. Upon receipt, store it immediately at -80°C
Storage Buffer:
PBS only

For technical support and original validation data for this product please contact:

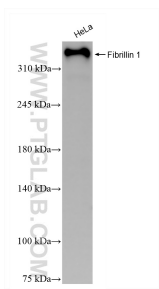
T: 4006900926

E: Proteintech-CN@ptglab.com

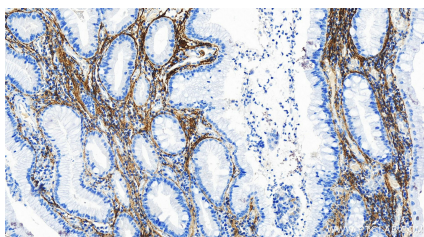
W: ptgcn.com

This product is exclusively available under Proteintech Group brand and is not available to purchase from any other manufacturer.

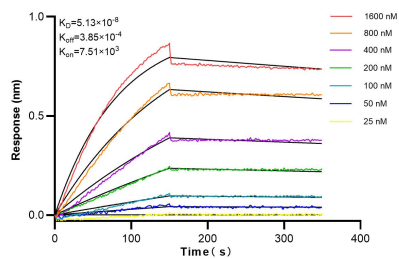
Selected Validation Data



HeLa cells were subjected to SDS PAGE followed by western blot with 83836-4-RR (Fibrillin 1 antibody) at dilution of 1:10000 incubated at room temperature for 1.5 hours. This data was developed using the same antibody clone with 83836-4-PBS in a different storage buffer formulation.



Immunohistochemical analysis of paraffin-embedded human stomach cancer tissue slide using 83836-4-RR (Fibrillin 1 antibody) at dilution of 1:400 (under 20x lens). Heat mediated antigen retrieval with Tris-EDTA buffer(pH9). This data was developed using the same antibody clone with 83836-4-PBS in a different storage buffer formulation.



Biolayer interferometry (BLI) kinetic assays of 83836-4-RR against Human Fibrillin 1 were performed. The affinity constant is 51.3 nM.