

For Research Use Only

Fibrillin 1 Recombinant antibody, PBS Only (Capture)

Catalog Number: 83836-2-PBS



Basic Information

Catalog Number:

83836-2-PBS

Concentration:

1000 µg/ml

Source:

Rabbit

Isotype:

IgG

Immunogen Catalog Number:

AG30283

GenBank Accession Number:

BC146854

GeneID (NCBI):

2200

UNIPROT ID:

P35555

Full Name:

fibrillin 1

Purification Method:

Protein A purification

CloneNo.:

240960E11

Applications

Tested Applications:

IF/ICC, Cytometric bead array, Sandwich ELISA, Indirect ELISA, Sample test

Species Specificity:

human

Background Information

Fibrillin-1 belongs to the fibrillin family. Fibrillins are structural components of 10-12 nm extracellular calcium-binding microfibrils, which occur either in association with elastin or in elastin-free bundles. Fibrillin-1-containing microfibrils provide long-term force bearing structural support. Defects in Fibrillin-1 are a cause of Marfan syndrome (MFS), isolated ectopia lentis (EL), Weill-Marchesani syndrome autosomal dominant (ADWMS), Shprintzen-Goldberg craniosynostosis syndrome (SGS) or MASS syndrome.

Storage

Storage:

Store at -80°C.

The product is shipped with ice packs. Upon receipt, store it immediately at -80°C

Storage Buffer:

PBS only, pH7.3

For technical support and original validation data for this product please contact:

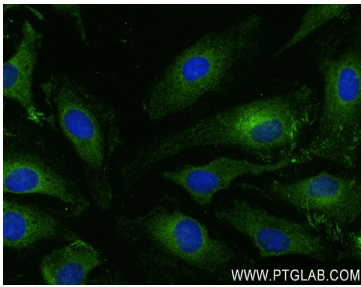
T: 4006900926

E: Proteintech-CN@ptglab.com

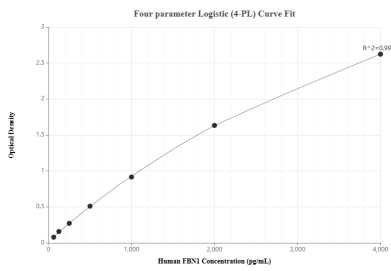
W: ptgcn.com

This product is exclusively available under Proteintech Group brand and is not available to purchase from any other manufacturer.

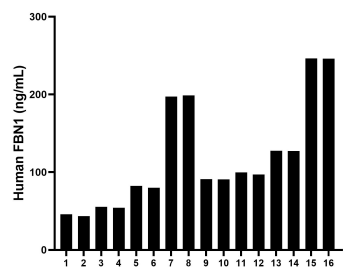
Selected Validation Data



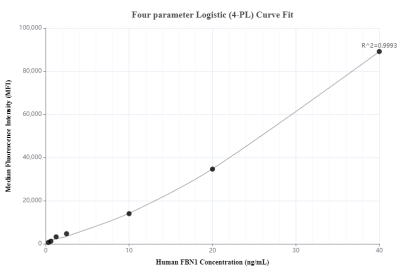
Immunofluorescent analysis of (-20°C Ethanol) fixed HeLa cells using Fibrillin 1 antibody (83836-2-RR, Clone: 240960E11) at dilution of 1:200 and CoraLite®488-Conjugated AffiniPure Goat Anti-Rabbit IgG(H+L) (SA00013-2). This data was developed using the same antibody clone with 83836-2-PBS in a different storage buffer formulation.



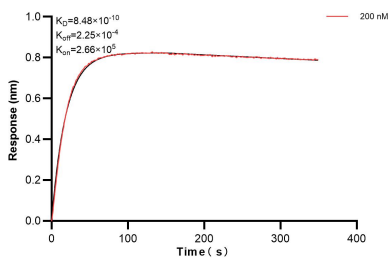
Sandwich ELISA standard curve of MP00807-1, Human Fibrillin 1/FBN1 Recombinant Matched Antibody Pair - PBS only. 83836-2-PBS was coated to a plate as the capture antibody and incubated with serial dilutions of standard Ag30283. 83836-1-PBS was HRP conjugated as the detection antibody. Range: 62.5-4000 pg/mL



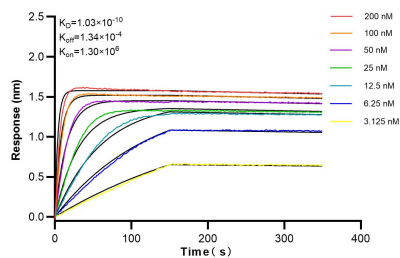
Serum of sixteen individual healthy human donors was measured. The human Fibrillin 1/FBN1 concentration of detected samples was determined to be 117.73 ng/mL with a range of 43.48 - 246.44 ng/mL.



Cytometric bead array standard curve of MP00807-1, Fibrillin 1/FBN1 Recombinant Matched Antibody Pair, PBS Only. Capture antibody: 83836-2-PBS. Detection antibody: 83836-1-PBS. Standard: Ag30283. Range: 0.313-40 ng/mL.



Biolayer interferometry (BLI) kinetic assay of 83836-2-PBS against Human Fibrillin 1 was performed. The affinity constant is 0.848 nM.



Biolayer interferometry (BLI) kinetic assays of 83836-2-RR against Human Fibrillin 1 were performed. The affinity constant is 0.103 nM.