

For Research Use Only

# Fibrillin 1 Recombinant antibody, PBS Only (Detector)

Catalog Number: 83836-1-PBS



## Basic Information

Catalog Number:

83836-1-PBS

Concentration:

1 mg/ml

Source:

Rabbit

Isotype:

IgG

Immunogen Catalog Number:

AG30283

GenBank Accession Number:

BC146854

GeneID (NCBI):

2200

UNIPROT ID:

P35555

Full Name:

fibrillin 1

Purification Method:

Protein A purification

CloneNo.:

240960E5

## Applications

Tested Applications:

Cytometric bead array, Sandwich ELISA, Indirect ELISA,  
Sample test

Species Specificity:

human

## Background Information

### Storage

Storage:

Store at -80°C.

**The product is shipped with ice packs. Upon receipt, store it immediately at -80°C**

Storage Buffer:

PBS only

For technical support and original validation data for this product please contact:

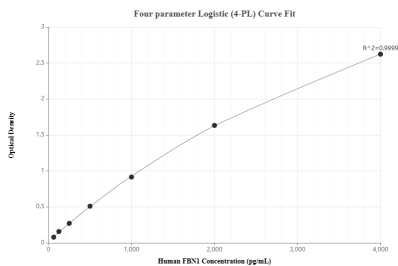
T: 4006900926

E: [Proteintech-CN@ptglab.com](mailto:Proteintech-CN@ptglab.com)

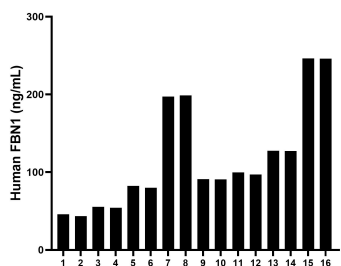
W: [ptgcn.com](http://ptgcn.com)

**This product is exclusively available under Proteintech Group brand and is not available to purchase from any other manufacturer.**

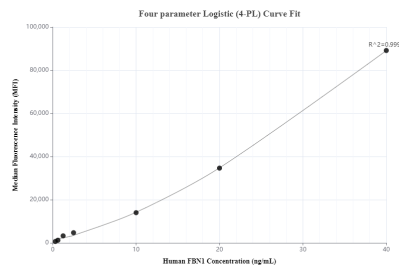
## Selected Validation Data



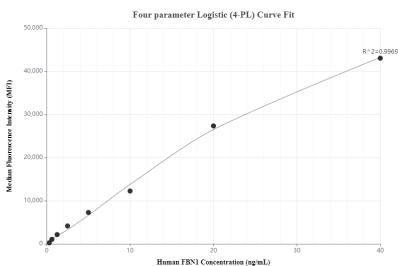
Sandwich ELISA standard curve of MP00807-1, Human Fibrillin 1/FBN1 Recombinant Matched Antibody Pair - PBS only. 83836-2-PBS was coated to a plate as the capture antibody and incubated with serial dilutions of standard Ag30283. 83836-1-PBS was HRP conjugated as the detection antibody. Range: 62.5-4000 pg/mL



Serum of sixteen individual healthy human donors was measured. The human Fibrillin 1/FBN1 concentration of detected samples was determined to be 117.73 ng/mL with a range of 43.48 - 246.44 ng/mL



Cytometric bead array standard curve of MP00807-1, Fibrillin 1/FBN1 Recombinant Matched Antibody Pair, PBS Only. Capture antibody: 83836-2-PBS. Detection antibody: 83836-1-PBS. Standard: Ag30283. Range: 0.313-40 ng/mL



Cytometric bead array standard curve of MP00807-2, Fibrillin 1/FBN1 Recombinant Matched Antibody Pair, PBS Only. Capture antibody: 83836-3-PBS. Detection antibody: 83836-1-PBS. Standard: Ag30283. Range: 0.313-40 ng/mL