

For Research Use Only

BCRP/ABCG2 Recombinant antibody, PBS Only (Capture)

Catalog Number: 83835-1-PBS



Basic Information

Catalog Number:

83835-1-PBS

Size:

1 mg/ml

Source:

Rabbit

Isotype:

IgG

Immunogen Catalog Number:

AG25911

GenBank Accession Number:

BC021281

GeneID (NCBI):

9429

UNIPROT ID:

Q9UNQ0

Full Name:

ATP-binding cassette, sub-family G
(WHITE), member 2

Calculated MW:

70 kDa

Observed MW:

68-72 kDa

Purification Method:

Protein A purification

CloneNo.:

240959A4

Applications

Tested Applications:

WB, Cytometric bead array, Indirect ELISA

Species Specificity:

human, mouse

Background Information

BCRP (breast cancer resistance protein) confers a broad spectrum of drug resistance and the expression of BCRP is enhanced in several cancer cell models. It has ATPase activity and belongs to a family of multiple drug resistant proteins. Data also indicated that BCRP might be an early marker for some stem cells.

Storage

Storage:

Store at -80°C.

The product is shipped with ice packs. Upon receipt, store it immediately at -80°C

Storage Buffer:

PBS Only

For technical support and original validation data for this product please contact:

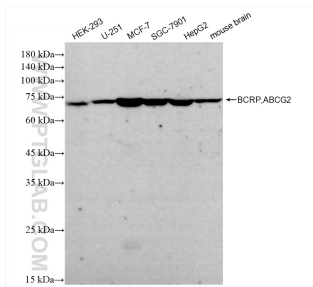
T: 4006900926

E: Proteintech-CN@ptglab.com

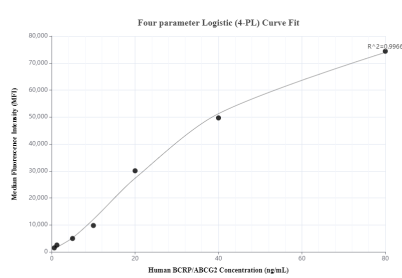
W: ptgcn.com

This product is exclusively available under Proteintech Group brand and is not available to purchase from any other manufacturer.

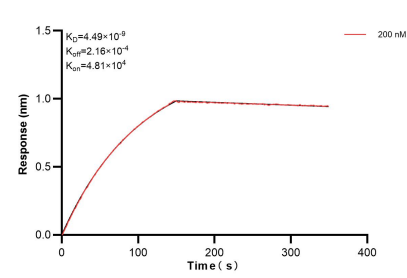
Selected Validation Data



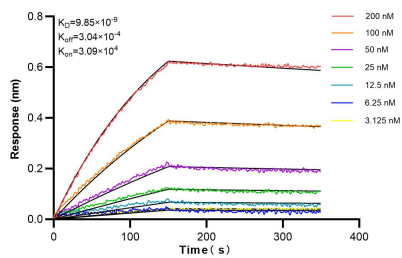
Various lysates were subjected to SDS PAGE followed by western blot with 83835-1-RR (BCRP,ABCG2 antibody) at dilution of 1:10000 incubated at room temperature for 1.5 hours. This data was developed using the same antibody clone with 83835-1-PBS in a different storage buffer formulation.



Cytometric bead array standard curve of MP00805-1, BCRP/ABCG2 Recombinant Matched Antibody Pair, PBS Only. Capture antibody: 83835-1-PBS. Detection antibody: 83835-2-PBS. Standard: Ag25911. Range: 0.625-80 ng/mL.



Biolayer interferometry (BLI) kinetic assay of 83835-1-PBS against Human BCRP/ABCG2 was performed. The affinity constant is 4.49 nM.



Biolayer interferometry (BLI) kinetic assays of 83835-1-RR against Human BCRP,ABCG2 were performed. The affinity constant is 9.85 nM.