

For Research Use Only

PTPRS Recombinant antibody

Catalog Number: 83833-5-RR



Basic Information

Catalog Number:

83833-5-RR

Size:

1000 ug/ml

Source:

Rabbit

Isotype:

IgG

GenBank Accession Number:

NM_002850

GeneID (NCBI):

5802

UNIPROT ID:

Q13332

Full Name:

protein tyrosine phosphatase,
receptor type, S

Calculated MW:

217 kDa

Observed MW:

140 kDa, 217 kDa

Purification Method:

Protein A purification

CloneNo.:

241005B6

Recommended Dilutions:

WB 1:5000-1:50000

Applications

Tested Applications:

WB, ELISA

Species Specificity:

human

Positive Controls:

WB : A431 cells, SH-5Y5Y cells

Background Information

Protein tyrosine phosphatase receptor type S (PTPRS, also known as R-PTP-S, PTPSIGMA, and R-PTP-sigma) is an integral membrane protein. It can promote oligomerization by binding to large heparan sulfate proteoglycan structures, and interact with NTRK1/3, PPFIA1/2/3 (PMID: 25385546; 8524829; 9624153). The non-glycosylated molecular weight of PTPRS is 214 kDa, and the extracellular domain can be cleaved near the cell membrane by an endoprotease to generate a glycosylated 140 kDa protein. Variations and mutations of PTPRS are associated with Alzheimer's disease and cholangiocarcinoma (PMID: 38766183; 35991009).

Storage

Storage:

Store at -20°C. Stable for one year after shipment.

Storage Buffer:

PBS with 0.02% sodium azide and 50% glycerol pH 7.3.

Aliquoting is unnecessary for -20°C storage

For technical support and original validation data for this product please contact:

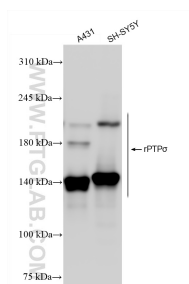
T: 4006900926

E: Proteintech-CN@ptglab.com

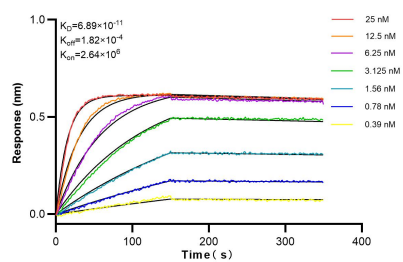
W: ptgcn.com

This product is exclusively available under Proteintech Group brand and is not available to purchase from any other manufacturer.

Selected Validation Data



Various lysates were subjected to SDS PAGE followed by western blot with 83833-5-RR (rPTP α antibody) at dilution of 1:10000 incubated at room temperature for 1.5 hours.



Biolayer interferometry (BLI) kinetic assays of 83833-5-RR against Human PTPRS were performed. The affinity constant is 68.9 pM.