

For Research Use Only

ATP2B1 Recombinant antibody, PBS Only (Capture)

Catalog Number: 83827-3-PBS



Basic Information

Catalog Number:	GenBank Accession Number:	Purification Method:
83827-3-PBS	NM_001001323.1	Protein A purification
Size:	GeneID (NCBI):	CloneNo.:
1 mg/ml	490	240848D10
Source:	UNIPROT ID:	
Rabbit	P20020	
Isotype:	Full Name:	
IgG	ATPase, Ca++ transporting, plasma membrane 1	
Immunogen Catalog Number:	Calculated MW:	
AG32423	135 kDa	
	Observed MW:	
	130 kDa	

Applications

Tested Applications:
WB, IHC, Cytometric bead array, Indirect ELISA

Species Specificity:
human, mouse

Background Information

ATPase plasma membrane Ca²⁺ transporting 1 (ATP2B1, also known as plasma membrane Ca²⁺ pump isoform 1; PMCA1) belongs to the family of ATP-driven calmodulin-dependent Ca²⁺ pumps that participate in the regulation of intracellular free Ca²⁺ (PMID:35358416). The ATP2B1 contents of extracellular vesicles are increased in prostate cancer treated with enzalutamide and are negatively regulated by androgen receptors (PMID:29105980). ATP2B1 plays an important role in the prognosis of cholangiocarcinoma. Furthermore, ATP2B1 plays an important role in the prognosis of cholangiocarcinoma and can be a prognostic factor for cholangiocarcinoma (PMID:35875160).

Storage

Storage:
Store at -80°C.

The product is shipped with ice packs. Upon receipt, store it immediately at -80°C

Storage Buffer:
PBS Only

For technical support and original validation data for this product please contact:

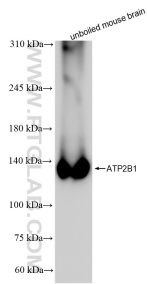
T: 4006900926

E: Proteintech-CN@ptglab.com

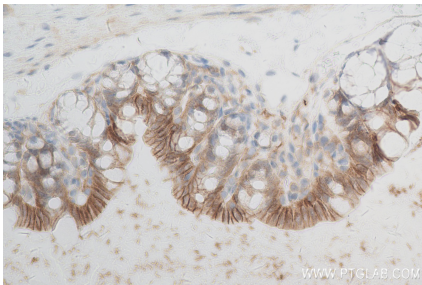
W: ptgcn.com

This product is exclusively available under Proteintech Group brand and is not available to purchase from any other manufacturer.

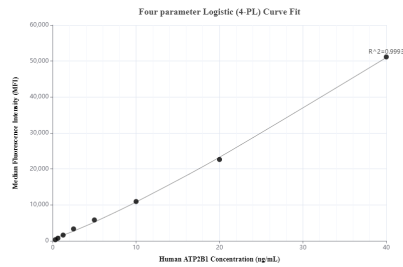
Selected Validation Data



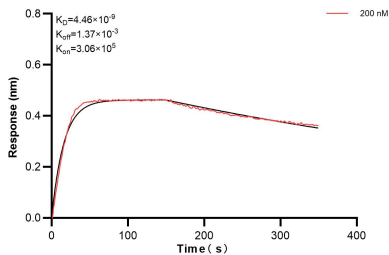
unboiled mouse brain tissue were subjected to SDS PAGE followed by western blot with 83827-3-RR (ATP2B1 antibody) at dilution of 1:10000 incubated at room temperature for 1.5 hours. This data was developed using the same antibody clone with 83827-3-PBS in a different storage buffer formulation.



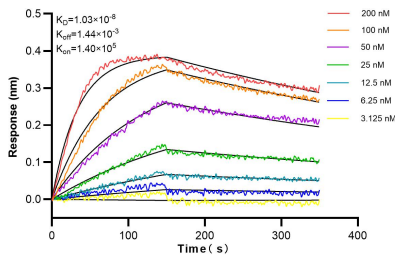
Immunohistochemical analysis of paraffin-embedded mouse small intestine tissue slide using 83827-3-RR (ATP2B1 antibody) at dilution of 1:0 (under 40x lens). Heat mediated antigen retrieval with Tris-EDTA buffer (pH 9.0). This data was developed using the same antibody clone with 83827-3-PBS in a different storage buffer formulation.



Cytometric bead array standard curve of MP00808-1, ATP2B1 Recombinant Matched Antibody Pair, PBS Only. Capture antibody: 83827-3-PBS. Detection antibody: 83827-2-PBS. Standard: Ag32423. Range: 0.313-40 ng/mL.



Biolayer interferometry (BLI) kinetic assay of 83827-3-PBS against Human ATP2B1 was performed. The affinity constant is 4.46 nM.



Biolayer interferometry (BLI) kinetic assays of 83827-3-RR against Human ATP2B1 were performed. The affinity constant is 10.3 nM.