

For Research Use Only

ATP2B1 Recombinant antibody, PBS Only (Capture/Detector)

Catalog Number: 83827-2-PBS



Basic Information

Catalog Number:

83827-2-PBS

Size:

1 mg/ml

Source:

Rabbit

Isotype:

IgG

Immunogen Catalog Number:

AG32423

GenBank Accession Number:

NM_001001323.1

GeneID (NCBI):

490

UNIPROT ID:

P20020

Full Name:

ATPase, Ca⁺⁺ transporting, plasma membrane 1

Calculated MW:

135 kDa

Purification Method:

Protein A purification

CloneNo.:

240848D2

Applications

Tested Applications:

Cytometric bead array, Sandwich ELISA, Indirect ELISA, Sample test

Species Specificity:

human

Background Information

Storage

Storage:

Store at -80°C.

The product is shipped with ice packs. Upon receipt, store it immediately at -80°C

Storage Buffer:

PBS Only

For technical support and original validation data for this product please contact:

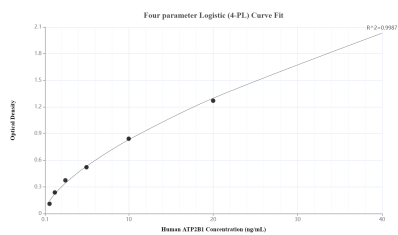
T: 4006900926

E: Proteintech-CN@ptglab.com

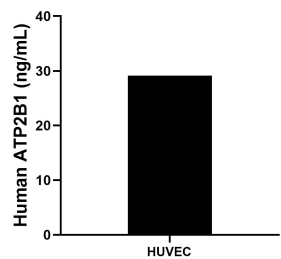
W: ptgcn.com

This product is exclusively available under Proteintech Group brand and is not available to purchase from any other manufacturer.

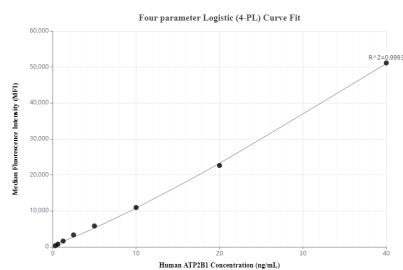
Selected Validation Data



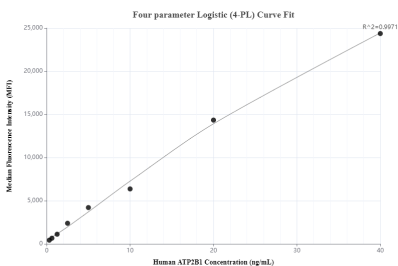
Sandwich ELISA standard curve of MP00808-3, Human ATP2B1 Recombinant Matched Antibody Pair - PBS only. 83827-2-PBS was coated to a plate as the capture antibody and incubated with serial dilutions of standard Ag32423. 83827-5-PBS was HRP conjugated as the detection antibody. Range: 0.625-40 ng/mL.



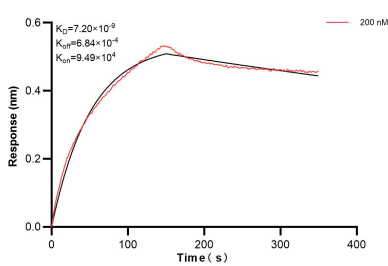
The mean ATP2B1 concentration was determined to be 29.13 ng/mL in HUVEC cell extract based on a 0.91 mg/mL extract load.



Cytometric bead array standard curve of MP00808-1, ATP2B1 Recombinant Matched Antibody Pair, PBS Only. Capture antibody: 83827-3-PBS. Detection antibody: 83827-2-PBS. Standard: Ag32423. Range: 0.313-40 ng/mL.



Cytometric bead array standard curve of MP00808-2, ATP2B1 Recombinant Matched Antibody Pair, PBS Only. Capture antibody: 83827-1-PBS. Detection antibody: 83827-2-PBS. Standard: Ag32423. Range: 0.313-40 ng/mL.



Biolayer interferometry (BLI) kinetic assay of 83827-2-PBS against Human ATP2B1 was performed. The affinity constant is 72.0 nM.