

For Research Use Only

# CNNM4 Recombinant antibody, PBS Only (Capture)

Catalog Number: 83824-4-PBS

Featured Product



## Basic Information

Catalog Number:

83824-4-PBS

Size:

1 mg/ml

Source:

Rabbit

Isotype:

IgG

Immunogen Catalog Number:

AG5121

GenBank Accession Number:

BC063295

GeneID (NCBI):

26504

UNIPROT ID:

Q6P4Q7

Full Name:

cyclin M4

Calculated MW:

87 kDa

Observed MW:

90-100 kDa

Purification Method:

Protein A purification

CloneNo.:

240873E9

## Applications

Tested Applications:

WB, Cytometric bead array, Indirect ELISA

Species Specificity:

human

## Background Information

Ancient conserved domain-containing protein 4/cyclin M4 (CNNM4), a membrane protein that stimulates Mg<sup>2+</sup> efflux, binds phosphatase of regenerating liver (PRL), which is frequently overexpressed in malignant human cancers (PMID: 25347473). CNNM4 is predominant in the brain, bone marrow, immune system, and especially abundant in the intestinal tract. CNNM4 localizes at the basolateral membrane of the intestinal epithelia and mediates transcellular Mg<sup>2+</sup> transport (PMID: 27006114).

## Storage

Storage:

Store at -80°C.

The product is shipped with ice packs. Upon receipt, store it immediately at -80°C

Storage Buffer:

PBS Only

For technical support and original validation data for this product please contact:

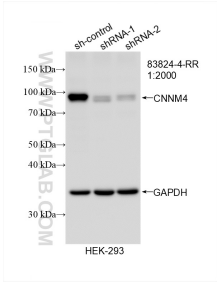
T: 4006900926

E: Proteintech-CN@ptglab.com

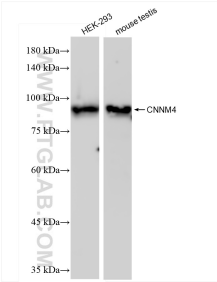
W: ptgcn.com

This product is exclusively available under Proteintech Group brand and is not available to purchase from any other manufacturer.

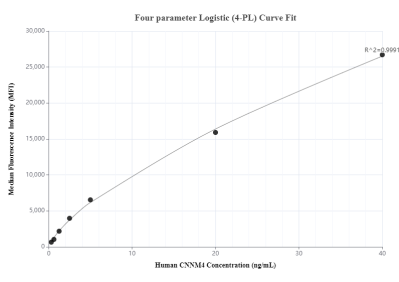
Selected Validation Data



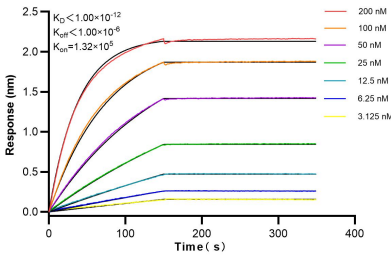
WB result of CNNM4 antibody (83824-4-RR; 1:2000; incubated at room temperature for 1.5 hours) with sh-Control and sh-CNNM4 transfected HEK-293 cells. This data was developed using the same antibody clone with 83824-4-PBS in a different storage buffer formulation.



Various lysates were subjected to SDS PAGE followed by western blot with 83824-4-RR (CNNM4 antibody) at dilution of 1:10000 incubated at room temperature for 1.5 hours. This data was developed using the same antibody clone with 83824-4-PBS in a different storage buffer formulation.



Cytometric bead array standard curve of MP00802-3, CNNM4 Recombinant Matched Antibody Pair, PBS Only. Capture antibody: 83824-4-PBS. Detection antibody: 83824-2-PBS. Standard: Ag5121. Range: 0.313-40 ng/mL.



Biolayer interferometry (BLI) kinetic assays of 83824-4-RR against Human CNNM4 were performed. The affinity constant is below 1 pM.