

For Research Use Only

PSENEN Recombinant antibody

Catalog Number: 83818-1-RR



Basic Information

Catalog Number:

83818-1-RR

Size:

1000 ug/ml

Source:

Rabbit

Isotype:

IgG

Immunogen Catalog Number:

AG9243

GenBank Accession Number:

BC009575

GeneID (NCBI):

55851

UNIPROT ID:

Q9NZ42

Full Name:

presenilin enhancer 2 homolog (C. elegans)

Calculated MW:

101 aa, 12 kDa

Observed MW:

12 kDa

Purification Method:

Protein A purification

CloneNo.:

240596H2

Recommended Dilutions:

WB 1:2000-1:10000

Applications

Tested Applications:

WB, ELISA

Species Specificity:

human

Positive Controls:

WB : A549 cells, SH-SY5Y cells

Background Information

PSENEN, also named PEN2, is a component of the gamma-secretase complex, which also includes presenilin (PSEN1) and nicastrin (NCSTN). The gamma-secretase complex is required for the intramembrane proteolysis of a number of membrane proteins, including the amyloid-beta precursor protein (APP) and Notch. PSENEN is required for Notch pathway signaling, and for the activity and accumulation of gamma-secretase. Mutations resulting in haploinsufficiency for this gene cause familial acne inversa-2 (ACNINV2).

Storage

Storage:

Store at -20°C. Stable for one year after shipment.

Storage Buffer:

PBS with 0.02% sodium azide and 50% glycerol pH 7.3.

Aliquoting is unnecessary for -20°C storage

For technical support and original validation data for this product please contact:

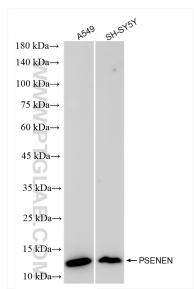
T: 4006900926

E: Proteintech-CN@ptglab.com

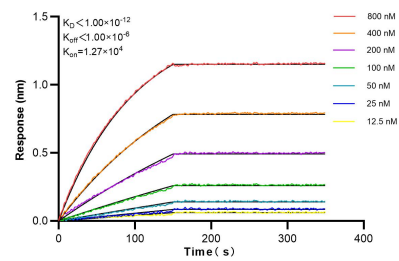
W: ptgcn.com

This product is exclusively available under Proteintech Group brand and is not available to purchase from any other manufacturer.

Selected Validation Data



Various lysates were subjected to SDS PAGE followed by western blot with 83818-1-RR (PSENEN antibody) at dilution of 1:5000 incubated at room temperature for 1.5 hours.



Biolayer interferometry (BLI) kinetic assays of 83818-1-RR against Human PSENEN were performed. The affinity constant is below 1 pM.