

For Research Use Only

# GATA3 Recombinant antibody, PBS Only (Capture/Detector)

Catalog Number: 83808-4-PBS



## Basic Information

Catalog Number:

83808-4-PBS

Concentration:

1 mg/ml

Source:

Rabbit

Isotype:

IgG

Immunogen Catalog Number:

AG0174

GenBank Accession Number:

BC003070

GeneID (NCBI):

2625

UNIPROT ID:

P23771

Full Name:

GATA binding protein 3

Calculated MW:

443 aa, 48 kDa

Purification Method:

Protein A purification

CloneNo.:

240684F5

## Applications

Tested Applications:

Cytometric bead array, Sandwich ELISA, Indirect ELISA,  
Sample test

Species Specificity:

human

## Background Information

### Storage

Storage:

Store at -80°C.

**The product is shipped with ice packs. Upon receipt, store it immediately at -80°C**

Storage Buffer:

PBS only, pH7.3

For technical support and original validation data for this product please contact:

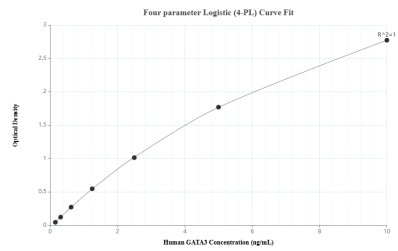
T: 4006900926

E: [Proteintech-CN@ptglab.com](mailto:Proteintech-CN@ptglab.com)

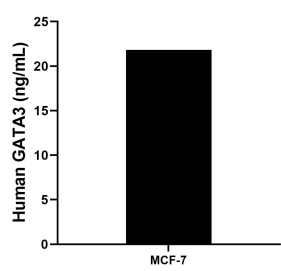
W: [ptgcn.com](http://ptgcn.com)

**This product is exclusively available under Proteintech Group brand and is not available to purchase from any other manufacturer.**

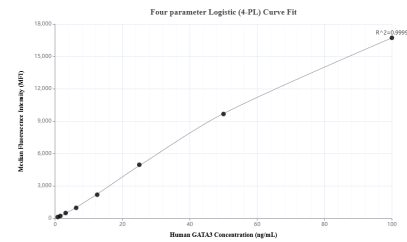
# Selected Validation Data



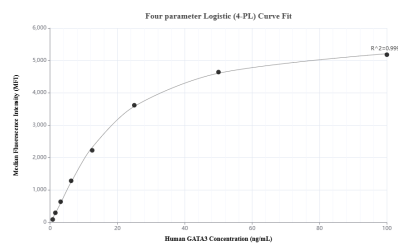
Sandwich ELISA standard curve of MP01933-1, Human GATA3 Recombinant Matched Antibody Pair - PBS only. 83808-1-PBS was coated to a plate as the capture antibody and incubated with serial dilutions of standard Ag0174. 83808-4-PBS was HRP conjugated as the detection antibody. Range: 0.156-10 ng/mL



The mean GATA3 concentration was determined to be 21.82 ng/mL in MCF-7 cell extract based on a 1.3 mg/mL extract load.



Cytometric bead array standard curve of MP01933-1, GATA3 Recombinant Matched Antibody Pair, PBS Only. Capture antibody: 83808-1-PBS. Detection antibody: 83808-4-PBS. Standard: Ag0174. Range: 0.781-100 ng/mL



Cytometric bead array standard curve of MP01933-2, GATA3 Recombinant Matched Antibody Pair, PBS Only. Capture antibody: 83808-4-PBS. Detection antibody: 83808-3-PBS. Standard: Ag0174. Range: 0.781-100 ng/mL