

For Research Use Only

MITF Recombinant antibody, PBS Only (Detector)

Catalog Number: 83803-2-PBS



Basic Information

Catalog Number: 83803-2-PBS	GenBank Accession Number: BC012503	Purification Method: Protein A purification
Size: 1 mg/ml	GeneID (NCBI): 4286	CloneNo.: 240815E7
Source: Rabbit	UNIPROT ID: O75030	
Isotype: IgG	Full Name: microphthalmia-associated transcription factor	
Immunogen Catalog Number: AG3679	Calculated MW: 91 aa, 10 kDa, 59 kDa	
	Observed MW: 60-65 kDa	

Applications

Tested Applications:
IF/ICC, FC (Intra), Cytometric bead array, Indirect
ELISA

Species Specificity:
human

Background Information

The retinal pigment epithelium (RPE) has a essential role in maintaining visual function and dedifferentiation of RPE contributes to the pathophysiology of several ocular diseases (PMID:22523078). Microphthalmia-associated transcription factor (MITF) is a key regulator of RPE differentiation that is also down-regulated in dedifferentiated hRPE cells. MITF is a basic helix-loop-helix (hHLH)-leucine zipper protein that involves in the development of various cell types, including neural crest-derived melanocytes and optic cup-derived retinal pigment epithelial cells (PMID: 10578055).

Storage

Storage:
Store at -80°C.
The product is shipped with ice packs. Upon receipt, store it immediately at -80°C

Storage Buffer:
PBS Only

For technical support and original validation data for this product please contact:

T: 4006900926

E: Proteintech-CN@ptglab.com

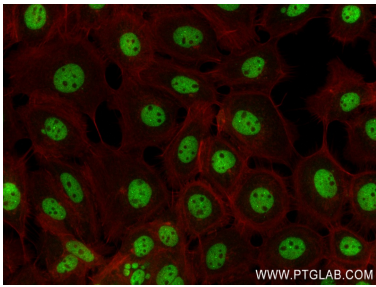
W: ptgcn.com

This product is exclusively available under Proteintech Group brand and is not available to purchase from any other manufacturer.

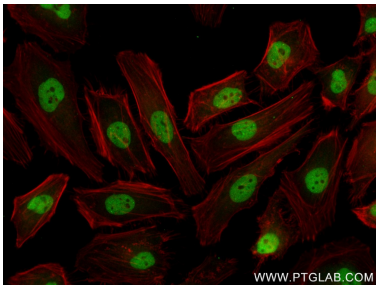
Selected Validation Data



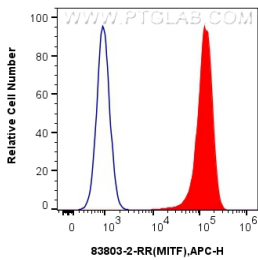
Immunofluorescent analysis of (4% PFA) fixed HepG2 cells using MITF antibody (83803-2-RR, Clone: 240815E7) at dilution of 1:400 and CoraLite®488-Conjugated Goat Anti-Rabbit IgG(H+L) (SA00013-2), CL594-Phalloidin (red). This data was developed using the same antibody clone with 83803-2-PBS in a different storage buffer formulation.



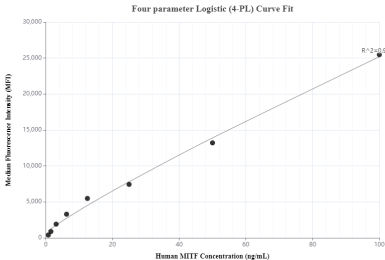
Immunofluorescent analysis of (4% PFA) fixed A431 cells using MITF antibody (83803-2-RR, Clone: 240815E7) at dilution of 1:400 and CoraLite®488-Conjugated Goat Anti-Rabbit IgG(H+L) (SA00013-2), CL594-Phalloidin (red). This data was developed using the same antibody clone with 83803-2-PBS in a different storage buffer formulation.



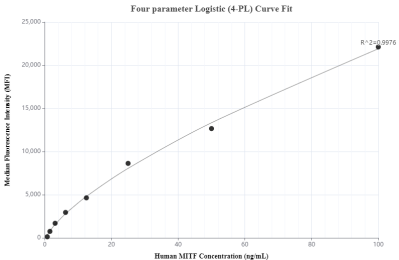
Immunofluorescent analysis of (4% PFA) fixed HeLa cells using MITF antibody (83803-2-RR, Clone: 240815E7) at dilution of 1:400 and CoraLite®488-Conjugated AffiniPure Goat Anti-Rabbit IgG(H+L) (SA00013-2), CL594-Phalloidin (red). This data was developed using the same antibody clone with 83803-2-PBS in a different storage buffer formulation.



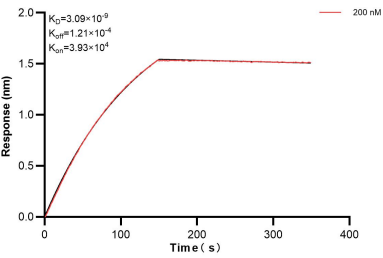
1x10⁶ HeLa cells were intracellularly stained with 0.25 ug MITF Recombinant antibody (83803-2-RR, Clone:240815E7) and APC-Conjugated AffiniPure Goat Anti-Rabbit IgG(H+L)(red), or 0.25 ug Isotype Control (blue). Cells were fixed and permeabilized with Transcription Factor Staining Buffer Kit (PF00011). This data was developed using the same antibody clone with 83803-2-PBS in a different storage buffer formulation.



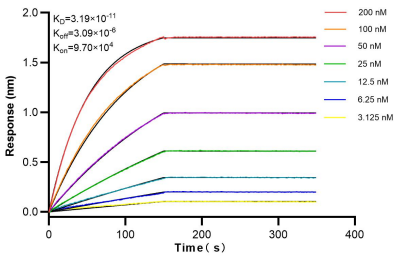
Cytometric bead array standard curve of MP00746-1, MITF Recombinant Matched Antibody Pair, PBS Only. Capture antibody: 83803-1-PBS. Detection antibody: 83803-2-PBS. Standard: Ag3679. Range: 0.781-100 ng/mL.



Cytometric bead array standard curve of MP00746-3, MITF Recombinant Matched Antibody Pair, PBS Only. Capture antibody: 83803-3-PBS. Detection antibody: 83803-2-PBS. Standard: Ag3679. Range: 0.781-100 ng/mL.



Biolayer interferometry (BLI) kinetic assay of 83803-2-PBS against Human MITF was performed. The affinity constant is 3.09 nM.



Biolayer interferometry (BLI) kinetic assays of 83803-2-RR against Human MITF were performed. The affinity constant is 31.9 pM.