

For Research Use Only

WDR21C Recombinant antibody

Catalog Number: 83802-4-RR

Featured Product



Basic Information

Catalog Number:

83802-4-RR

Concentration:

1000 ug/ml

Source:

Rabbit

Isotype:

IgG

Immunogen Catalog Number:

AG30748

GenBank Accession Number:

BC111778

GeneID (NCBI):

138009

UNIPROT ID:

Q8NA75

Full Name:

WD repeat domain 21C

Calculated MW:

395 aa, 44 kDa

Observed MW:

44-50 kDa

Purification Method:

Protein A purification

CloneNo.:

240402H3

Recommended Dilutions:

WB: 1:5000-1:50000

Applications

Tested Applications:

WB, ELISA

Species Specificity:

human

Positive Controls:

WB : HEK-293 cells, HeLa cells, U-251 cells

Background Information

WDR21C (WD repeat-containing protein 21C), also known as DCAF4L2. It is expected to be located in the cytoplasm, which is enriched in testis. WDR21C is a member of WD-repeat proteins, which commonly serve as mediators of protein-protein interplay. It is reported that elevated WDR21C expression in human colorectal cancer (CRC) significantly correlated with a more advanced clinical stage as in lymphatic and distant metastasis. More importantly, elevated WDR21C expression is an independent prognosis factor for survival (PMID: 27158335). The molecular weight of WDR21C is 43 kDa.

Storage

Storage:

Store at -20°C. Stable for one year after shipment.

Storage Buffer:

PBS with 0.02% sodium azide and 50% glycerol, pH7.3

Aliquoting is unnecessary for -20°C storage

For technical support and original validation data for this product please contact:

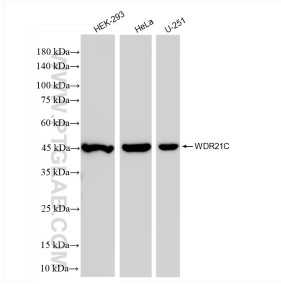
T: 4006900926

E: Proteintech-CN@ptglab.com

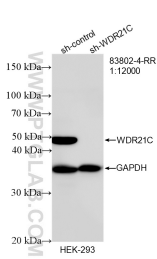
W: ptgcn.com

This product is exclusively available under Proteintech Group brand and is not available to purchase from any other manufacturer.

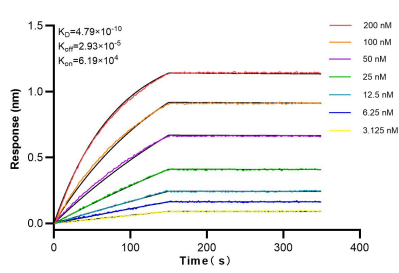
Selected Validation Data



Various lysates were subjected to SDS PAGE followed by western blot with 83802-4-RR (WDR21C antibody) at dilution of 1:10000 incubated at room temperature for 1.5 hours.



WB result of WDR21C antibody (83802-4-RR; 1:12000; incubated at room temperature for 1.5 hours) with sh-Control and sh-WDR21C transfected HEK-293 cells.



Biolayer interferometry (BLI) kinetic assays of 83802-4-RR against Human WDR21C were performed. The affinity constant is 0.479 nM.