

For Research Use Only

CEBPB Recombinant monoclonal antibody, PBS Only

Catalog Number: 83791-6-PBS



Basic Information

Catalog Number: 83791-6-PBS	GenBank Accession Number: BC007538	Purification Method: Protein A purification
Source: Rabbit	GeneID (NCBI): 1051	CloneNo.: 240836G6
Isotype: IgG	UNIPROT ID: P17676	
Immunogen Catalog Number: AG20073	Full Name: CCAAT/enhancer binding protein (C/EBP), beta	
	Calculated MW: 345 aa, 36 kDa	
	Observed MW: 42 kDa, 46 kDa	

Applications

Tested Applications:
WB, IHC, IF/ICC, FC (Intra), ELISA, ChIP-qPCR

Species Specificity:
human, mouse

Background Information

CCAAT/enhancer-binding protein beta (CEBPB), also known as LAP, is a important transcriptional activator in the regulation of genes involved in immune and inflammatory responses. It specifically binds to an IL-1 response element in the IL-6 gene. CEBPb mRNAs possess alternative translation-initiation codons, which result in the formation of truncated forms of the protein. Three variants of CEBPBs have been detected: a 46 kDa full-length liver-enriched transcription-activating protein (LAP1), a 42 kDa LAP2 and a 20 kDa liver-enriched transcription-inhibitory protein (LIP). (PMID:18820298).

Storage

Storage:
Store at -80°C.
The product is shipped with ice packs. Upon receipt, store it immediately at -80°C

Storage Buffer:
PBS only, pH7.3

For technical support and original validation data for this product please contact:

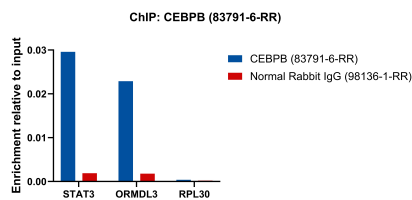
T: 4006900926

E: Proteintech-CN@ptglab.com

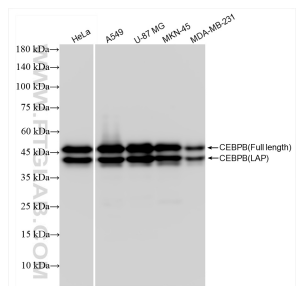
W: ptgcn.com

This product is exclusively available under Proteintech Group brand and is not available to purchase from any other manufacturer.

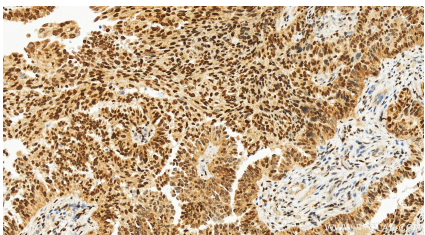
Selected Validation Data



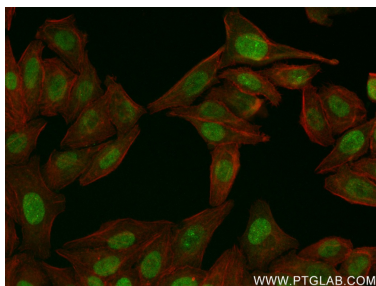
Chromatin was prepared from NIH/3T3 cells. Cells were fixed with formaldehyde for 10 minutes. The ChIP was performed with 20 µg of cross-linked chromatin, 5 µg of CEBPB (83791-6-RR) or 5 µg of Normal Rabbit IgG (98136-1-RR), and 20 µl of Protein A Magarose Beads. The immunoprecipitated DNA was quantified by real-time PCR. This data was developed using the same antibody clone with 83791-6-PBS in a different storage buffer formulation.



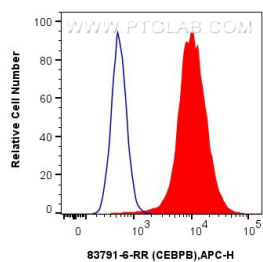
Various lysates were subjected to SDS PAGE followed by western blot with 83791-6-RR (CEBPB antibody) at dilution of 1:10000 incubated at room temperature for 1.5 hours. This data was developed using the same antibody clone with 83791-6-PBS in a different storage buffer formulation.



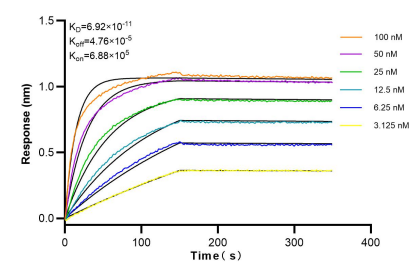
Immunohistochemical analysis of paraffin-embedded human ovarian cancer slide using 83791-6-RR (CEBPB antibody) at dilution of 1:1000 (under 20x lens). Heat mediated antigen retrieval with Tris-EDTA buffer (pH 9.0). This data was developed using the same antibody clone with 83791-6-PBS in a different storage buffer formulation.



Immunofluorescent analysis of (4% PFA) fixed HepG2 cells using CEBPB antibody (83791-6-RR, Clone: 240836G6) at dilution of 1:300 and CoraLite®488-Conjugated AffiniPure Goat Anti-Rabbit IgG(H+L) (SA00013-2), CL594-Phalloidin (red). This data was developed using the same antibody clone with 83791-6-PBS in a different storage buffer formulation.



1x10⁶ HeLa cells were intracellularly stained with 0.25 µg CEBPB Recombinant antibody (83791-6-RR, Clone:240836G6) and APC-Conjugated AffiniPure Goat Anti-Rabbit IgG(H+L)(red), or 0.25 µg Isotype Control (blue). Cells were fixed and permeabilized with True-Nuclear Transcription Factor Buffer Set. This data was developed using the same antibody clone with 83791-6-PBS in a different storage buffer formulation.



Biolayer interferometry (BLI) kinetic assays of 83791-6-RR against Human CEBPB were performed. The affinity constant is 69.2 pM.