

For Research Use Only

Islet 1 Recombinant antibody, PBS Only (Detector)

Catalog Number: 83784-6-PBS



Basic Information

Catalog Number:	83784-6-PBS	GenBank Accession Number:	BC031213	Purification Method:	Protein A purification
Size:	1 mg/ml	GeneID (NCBI):	3670	CloneNo.:	240833B2
Source:	Rabbit	UNIPROT ID:	P61371		
Isotype:	IgG	Full Name:	ISL LIM homeobox 1		
Immunogen Catalog Number:	AG33541	Calculated MW:	39 kDa		
		Observed MW:	39-45 kDa		

Applications

Tested Applications:
WB, Sandwich ELISA, Indirect ELISA, Sample test

Species Specificity:
human

Background Information

ISL1 belongs to the LIM homeodomain transcription factor family that binds to the enhancer region of the INS gene. It plays a pivotal role in cardiogenesis, and lacking ISL1 expression results in growth arrest or displays profound defects in heart development, including atria, ventricle, and the inflow and outflow tracts. Ubiquitinated probably by WWP1 E3 ubiquitin ligase; ubiquitination is followed by protein degradation.

Storage

Storage:
Store at -80°C.
The product is shipped with ice packs. Upon receipt, store it immediately at -80°C

Storage Buffer:
PBS Only

For technical support and original validation data for this product please contact:

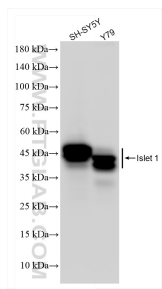
T: 4006900926

E: Proteintech-CN@ptglab.com

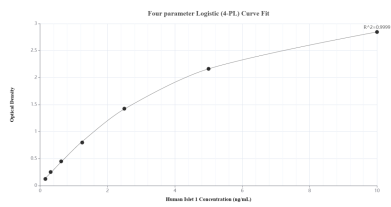
W: ptgcn.com

This product is exclusively available under Proteintech Group brand and is not available to purchase from any other manufacturer.

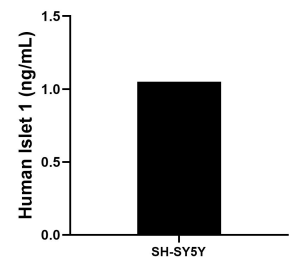
Selected Validation Data



Various lysates were subjected to SDS PAGE followed by western blot with 83784-6-RR (Islet 1 antibody) at dilution of 1:10000 incubated at room temperature for 1.5 hours. This data was developed using the same antibody clone with 83784-6-PBS in a different storage buffer formulation.



Sandwich ELISA standard curve of MP00771-4, Human Islet 1 Recombinant Matched Antibody Pair - PBS only. 83784-7-PBS was coated to a plate as the capture antibody and incubated with serial dilutions of standard Ag33541. 83784-6-PBS was HRP conjugated as the detection antibody. Range: 0.156-10 ng/mL.



The mean Islet 1 concentration was determined to be 1.05 ng/mL in SH-SY5Y cell extract based on a 3.40 mg/mL extract load.