

For Research Use Only

ISLR Recombinant antibody

Catalog Number: 83782-5-RR



Basic Information

Catalog Number: 83782-5-RR	GenBank Accession Number: BC022478	Purification Method: Protein A purification
Concentration: 1000 ug/ml	GeneID (NCBI): 3671	CloneNo.: 240727D4
Source: Rabbit	UNIPROT ID: O14498	Recommended Dilutions: WB 1:500-1:2000 IHC 1:500-1:2000
Isotype: IgG	Full Name: immunoglobulin superfamily containing leucine-rich repeat	
Immunogen Catalog Number: AG19446	Calculated MW: 428 aa, 46 kDa	
	Observed MW: 44-46 kDa	

Applications

Tested Applications: WB, IHC, ELISA	Positive Controls:
Species Specificity: human, mouse	WB : mouse retina tissue, NIH/3T3 cells
Note-IHC: suggested antigen retrieval with TE buffer pH 9.0; (*) Alternatively, antigen retrieval may be performed with citrate buffer pH 6.0	IHC : mouse eye tissue,

Background Information

The Immunoglobulin superfamily containing leucine-rich repeat protein (ISLR), is involved in various biological events, such as embryonic development, Gaucher's disease, and replicative senescence of fibroblasts in some organs, including the heart, pancreas, and bone marrow. ISLR, also known as meflin, is a newly discovered marker of mesenchymal stem cells, which is involved in pathological fibrosis and the cancer microenvironment. (PMID: 34713300)

Storage

Storage:
Store at -20°C. Stable for one year after shipment.
Storage Buffer:
PBS with 0.02% sodium azide and 50% glycerol pH 7.3.
Aliquoting is unnecessary for -20°C storage

For technical support and original validation data for this product please contact:

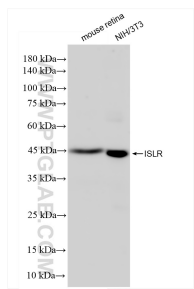
T: 4006900926

E: Proteintech-CN@ptglab.com

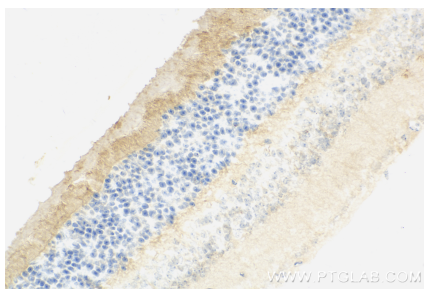
W: ptgcn.com

This product is exclusively available under Proteintech Group brand and is not available to purchase from any other manufacturer.

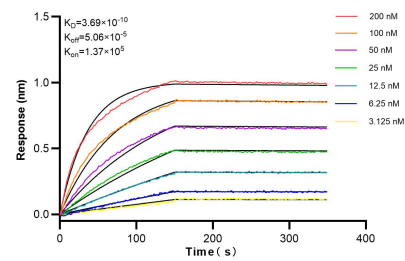
Selected Validation Data



Various lysates were subjected to SDS PAGE followed by western blot with 83782-5-RR (ISLR antibody) at dilution of 1:1000 incubated at room temperature for 1.5 hours.



Immunohistochemical analysis of paraffin-embedded mouse eye tissue slide using 83782-5-RR (ISLR antibody) at dilution of 1:1000 (under 40x lens). Heat mediated antigen retrieval with Tris-EDTA buffer (pH 9.0).



Biolayer interferometry (BLI) kinetic assays of 83782-5-RR against Human ISLR were performed. The affinity constant is 0.369 nM.