

For Research Use Only

ISLR Recombinant monoclonal antibody, PBS Only (Capture)

Catalog Number: 83782-2-PBS



Basic Information

Catalog Number:

83782-2-PBS

Source:

Rabbit

Isotype:

IgG

Immunogen Catalog Number:

AG19446

GenBank Accession Number:

BC022478

GeneID (NCBI):

3671

UNIPROT ID:

O14498

Full Name:

immunoglobulin superfamily
containing leucine-rich repeat

Calculated MW:

428 aa, 46 kDa

Purification Method:

Protein A purification

CloneNo.:

240727A12

Applications

Tested Applications:

Cytometric bead array, Indirect ELISA

Species Specificity:

human

Background Information

Storage

Storage:

Store at -80°C.

The product is shipped with ice packs. Upon receipt, store it immediately at -80°C

Storage Buffer:

PBS only, pH7.3

For technical support and original validation data for this product please contact:

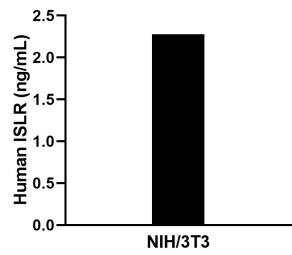
T: 4006900926

E: Proteintech-CN@ptglab.com

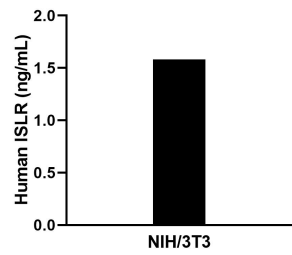
W: ptgcn.com

This product is exclusively available under Proteintech Group brand and is not available to purchase from any other manufacturer.

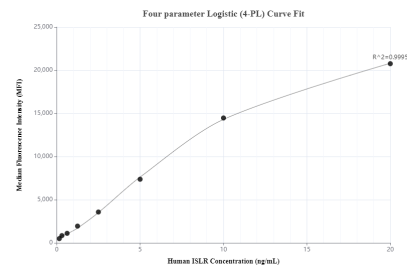
Selected Validation Data



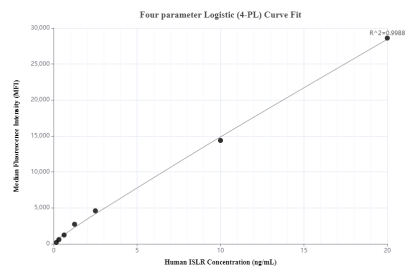
The mean ISLR concentration was determined to be 2.3 ng/mL in NIH/3T3 cell extract based on a 1.2 mg/mL extract load.



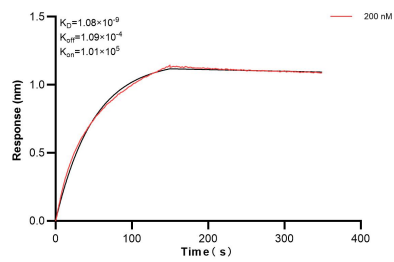
The mean ISLR concentration was determined to be 1.6 ng/mL in NIH/3T3 cell extract based on a 1.2 mg/mL extract load.



Cytometric bead array standard curve of MP00747-1, ISLR Recombinant Matched Antibody Pair, PBS Only. Capture antibody: 83782-2-PBS. Detection antibody: 83782-4-PBS. Standard: Ag19446. Range: 0.156-20 ng/mL.



Cytometric bead array standard curve of MP00747-3, ISLR Recombinant Matched Antibody Pair, PBS Only. Capture antibody: 83782-2-PBS. Detection antibody: 83782-1-PBS. Standard: Ag19446. Range: 0.156-20 ng/mL.



Biolayer interferometry (BLI) kinetic assay of 83782-2-PBS against Human ISLR was performed. The affinity constant is 1.08 nM.