

For Research Use Only

# BAG3 Recombinant antibody, PBS Only (Capture)

Catalog Number: 83779-1-PBS



## Basic Information

Catalog Number:	83779-1-PBS	GenBank Accession Number:	BC006418	Purification Method:	Protein A purification
Concentration:	1000 ug/ml	GeneID (NCBI):	9531	CloneNo.:	240860C9
Source:	Rabbit	UNIPROT ID:	O95817		
Isotype:	IgG	Full Name:	BCL2-associated athanogene 3		
Immunogen Catalog Number:	AG0956	Calculated MW:	61 kDa		

## Applications

**Tested Applications:**  
Cytometric bead array, Sandwich ELISA, Indirect ELISA, Sample test

**Species Specificity:**  
human

## Background Information

### Storage

**Storage:**  
Store at -80°C.  
**The product is shipped with ice packs. Upon receipt, store it immediately at -80°C**

**Storage Buffer:**  
PBS Only

For technical support and original validation data for this product please contact:

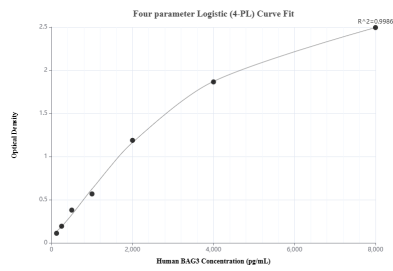
T: 4006900926

E: [Proteintech-CN@ptglab.com](mailto:Proteintech-CN@ptglab.com)

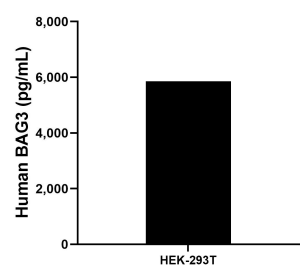
W: [ptgcn.com](http://ptgcn.com)

**This product is exclusively available under Proteintech Group brand and is not available to purchase from any other manufacturer.**

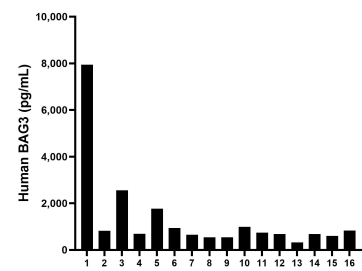
Selected Validation Data



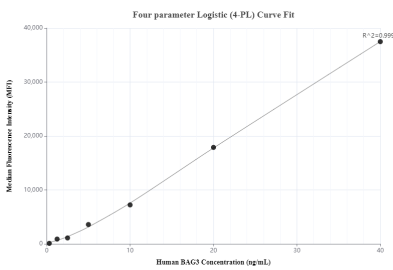
Sandwich ELISA standard curve of MP00740-1, Human BAG3 Recombinant Matched Antibody Pair - PBS only. 83779-1-PBS was coated to a plate as the capture antibody and incubated with serial dilutions of standard Ag0956. 83779-2-PBS was HRP conjugated as the detection antibody. Range: 125-8000 pg/mL



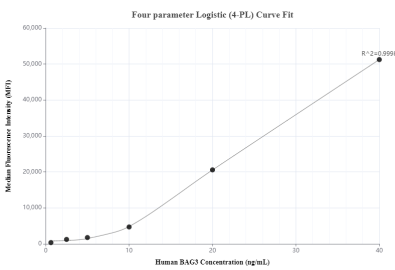
The mean BAG3 concentration was determined to be 5,853.6 /mL in HEK-293T cell extract based on a 1.4 mg/mL extract load.



Plasma of sixteen individual healthy human donors was measured. The human BAG3 concentration of detected samples was determined to be 1,332.2 pg/mL with a range of 324.4 - 7,946.1 pg/mL



Cytometric bead array standard curve of MP00740-1, BAG3 Recombinant Matched Antibody Pair, PBS Only. Capture antibody: 83779-1-PBS. Detection antibody: 83779-2-PBS. Standard: Ag0956. Range: 0.313-40 ng/mL



Cytometric bead array standard curve of MP00740-2, BAG3 Recombinant Matched Antibody Pair, PBS Only. Capture antibody: 83779-1-PBS. Detection antibody: 83779-3-PBS. Standard: Ag0956. Range: 0.625-40 ng/mL