

For Research Use Only

# CTLA-4/CD152 Recombinant antibody, PBS Only (Detector)

Catalog Number: 83778-3-PBS



## Basic Information

Catalog Number:

83778-3-PBS

Size:

1 mg/ml

Source:

Rabbit

Isotype:

IgG

GenBank Accession Number:

BC070162

GeneID (NCBI):

1493

UNIPROT ID:

P16410

Full Name:

cytotoxic T-lymphocyte-associated  
protein 4

Calculated MW:

223 aa, 25 kDa

Purification Method:

Protein A purification

CloneNo.:

240793F3

## Applications

Tested Applications:

Cytometric bead array, Sandwich ELISA, Indirect ELISA,  
Sample test

Species Specificity:

human

## Background Information

### Storage

Storage:

Store at -80°C.

The product is shipped with ice packs. Upon receipt, store it immediately at -80°C

Storage Buffer:

PBS Only

For technical support and original validation data for this product please contact:

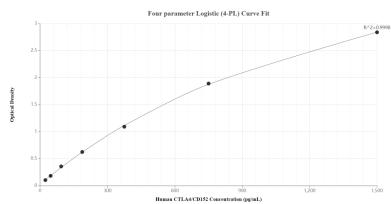
T: 4006900926

E: [Proteintech-CN@ptglab.com](mailto:Proteintech-CN@ptglab.com)

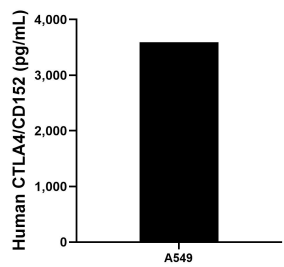
W: [ptgcn.com](http://ptgcn.com)

This product is exclusively available under Proteintech Group brand and is not available to purchase from any other manufacturer.

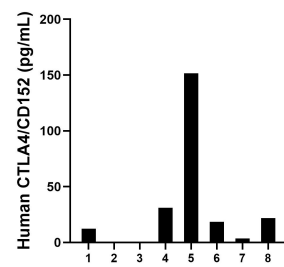
## Selected Validation Data



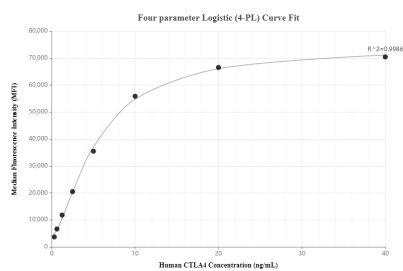
Sandwich ELISA standard curve of MP00736-4, Human CTLA4/CD152 Recombinant Matched Antibody Pair - PBS only. 83778-6-PBS was coated to a plate as the capture antibody and incubated with serial dilutions of standard Eg0972. 83778-3-PBS was HRP conjugated as the detection antibody. Range: 23.4-1500 pg/mL



The mean CTLA4/CD152 concentration was determined to be 3,592.9 pg/mL in A549 cell extract based on a 2.2 mg/mL extract load.



Serum of eight individual healthy human donors was measured. The human CTLA4/CD152 concentration of detected samples was determined to be 39.8 pg/mL with a range of ND-151.6 pg/mL



Cytometric bead array standard curve of MP00736-3, CTLA4/CD152 Recombinant Matched Antibody Pair, PBS Only. Capture antibody: 83778-2-PBS. Detection antibody: 83778-3-PBS. Standard: Eg0972. Range: 0.313-40 ng/mL