

For Research Use Only

Coagulation Factor III/Tissue Factor Recombinant antibody, PBS Only (Detector)

Catalog Number: 83776-2-PBS



Basic Information

Catalog Number:

83776-2-PBS

Size:

1 mg/ml

Source:

Rabbit

Isotype:

IgG

GenBank Accession Number:

NM_001993.5

GeneID (NCBI):

2152

UNIPROT ID:

P13726-1

Full Name:

coagulation factor III (thromboplastin,
tissue factor)

Calculated MW:

33 kDa

Purification Method:

Protein A purification

CloneNo.:

240784E5

Applications

Tested Applications:

Cytometric bead array, Sandwich ELISA, Indirect ELISA,
Sample test

Species Specificity:

human

Background Information

Storage

Storage:

Store at -80°C.

The product is shipped with ice packs. Upon receipt, store it immediately at -80°C

Storage Buffer:

PBS Only

For technical support and original validation data for this product please contact:

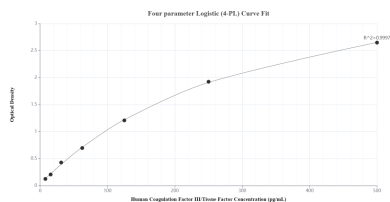
T: 4006900926

E: Proteintech-CN@ptglab.com

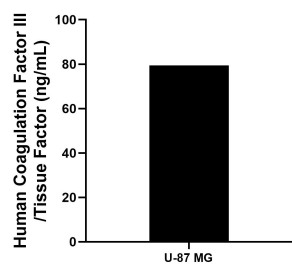
W: ptgcn.com

This product is exclusively available under Proteintech Group brand and is not available to purchase from any other manufacturer.

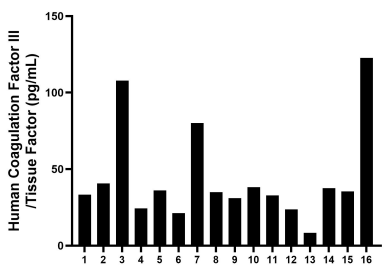
Selected Validation Data



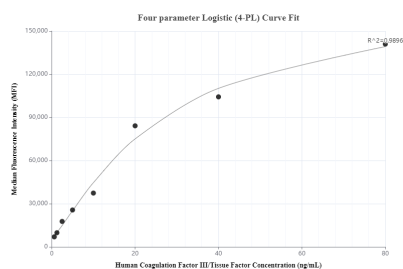
Sandwich ELISA standard curve of MP00732-1, Human Coagulation Factor III/Tissue Factor Recombinant Matched Antibody Pair - PBS only. 83776-1-PBS was coated to a plate as the capture antibody and incubated with serial dilutions of standard Eg1052. 83776-2-PBS was HRP conjugated as the detection antibody. Range: 7.8-500 pg/mL



The mean Coagulation Factor III/Tissue Factor concentration was determined to be 79.46 ng/mL in U-87 MG cell extract based on a 3.0 mg/mL extract load.



Serum of sixteen individual healthy human donors was measured. The Coagulation Factor III/Tissue Factor concentration of detected samples was determined to be 44.3 pg/mL with a range of 8.4 - 122.7 pg/mL



Cytometric bead array standard curve of MP00732-1, Coagulation Factor III/Tissue Factor Recombinant Matched Antibody Pair, PBS Only. Capture antibody: 83776-1-PBS. Detection antibody: 83776-2-PBS. Standard: Eg1052. Range: 0.625-80 ng/mL