

For Research Use Only

# APOL1 Recombinant antibody

Catalog Number: 83770-5-RR



## Basic Information

<b>Catalog Number:</b> 83770-5-RR	<b>GenBank Accession Number:</b> BC017331	<b>Purification Method:</b> Protein A purification
<b>Size:</b> 1000 ug/ml	<b>GeneID (NCBI):</b> 8542	<b>CloneNo.:</b> 240814D11
<b>Source:</b> Rabbit	<b>UNIPROT ID:</b> O14791	<b>Recommended Dilutions:</b> WB 1:5000-1:50000 IF/ICC 1:500-1:2000
<b>Isotype:</b> IgG	<b>Full Name:</b> apolipoprotein L, 1	
<b>Immunogen Catalog Number:</b> AG2016	<b>Calculated MW:</b> 44 kDa <b>Observed MW:</b> 39 kDa	

## Applications

<b>Tested Applications:</b> WB, IF/ICC, ELISA	<b>Positive Controls:</b>
<b>Species Specificity:</b> human	<b>WB :</b> A431 cells, A375 cells, HepG2 cells, MCF-7 cells, human plasma <b>IF/ICC :</b> HepG2 cells,

## Background Information

Human apolipo-protein L1 (APOL1) is a minor component of plasma high density lipoprotein (HDL) particles, acting as an interacting protein of apolipoprotein A1 (ApoA1). The human ApoL protein family was thought to be predominantly involved in lipid transport and metabolism. APOL1 is also involved in host innate immunity against Trypanosoma parasites. Once activated, APOL1 can lyse the parasite and protect human from infection. Genetic variants in APOL1 gene, which are found in African ancestry with high frequency, associate with chronic kidney disease, like focal segmental glomerulosclerosis (FSGS), HIV-associated nephropathy (HIVAN), and hypertensive nephropathy. APOL1 share structural and functional similarities with proteins of the Bcl-2 family and may has roles in apoptosis and autophagy. It is notable that APOL1 exists only in human and a few other primate species, and mouse does not express an APOL1 orthologue.

## Storage

**Storage:**  
Store at -20°C. Stable for one year after shipment.  
**Storage Buffer:**  
PBS with 0.02% sodium azide and 50% glycerol pH 7.3.  
**Aliquoting is unnecessary for -20°C storage**

For technical support and original validation data for this product please contact:

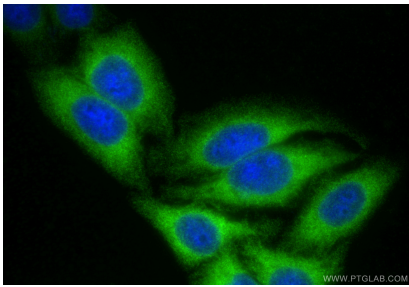
T: 4006900926

E: Proteintech-CN@ptglab.com

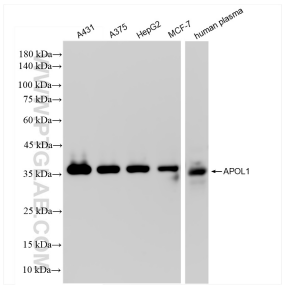
W: ptgcn.com

This product is exclusively available under Proteintech Group brand and is not available to purchase from any other manufacturer.

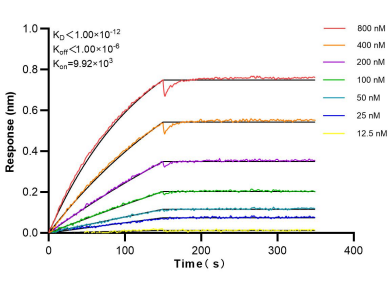
## Selected Validation Data



Immunofluorescent analysis of (-20°C Ethanol) fixed HepG2 cells using APOL1 antibody (83770-5-RR, Clone: 240814D11 ) at dilution of 1:1000 and CoraLite®488-Conjugated Goat Anti-Rabbit IgG(H+L) (SA00013-2).



Various lysates were subjected to SDS PAGE followed by western blot with 83770-5-RR (APOL1 antibody) at dilution of 1:10000 incubated at room temperature for 1.5 hours.



Biolayer interferometry (BLI) kinetic assays of 83770-5-RR against Human APOL1 were performed. The affinity constant is below 1 pM.