

For Research Use Only

# BCL9 Recombinant antibody, PBS Only (Detector)

Catalog Number: 83760-5-PBS



## Basic Information

Catalog Number:

83760-5-PBS

Size:

1 mg/ml

Source:

Rabbit

Isotype:

IgG

Immunogen Catalog Number:

AG19158

GenBank Accession Number:

BC116451

GeneID (NCBI):

607

UNIPROT ID:

O00512

Full Name:

B-cell CLL/lymphoma 9

Calculated MW:

1426 aa, 149 kDa

Purification Method:

Protein A purification

CloneNo.:

240682C12

## Applications

Tested Applications:

Cytometric bead array, Sandwich ELISA, Indirect ELISA, Sample test

Species Specificity:

human

## Background Information

### Storage

Storage:

Store at -80°C.

**The product is shipped with ice packs. Upon receipt, store it immediately at -80°C**

Storage Buffer:

PBS Only

For technical support and original validation data for this product please contact:

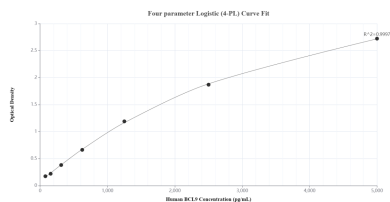
T: 4006900926

E: [Proteintech-CN@ptglab.com](mailto:Proteintech-CN@ptglab.com)

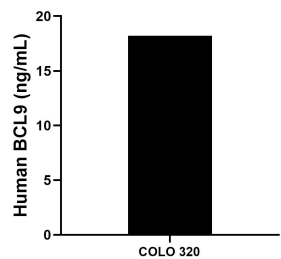
W: [ptgcn.com](http://ptgcn.com)

**This product is exclusively available under Proteintech Group brand and is not available to purchase from any other manufacturer.**

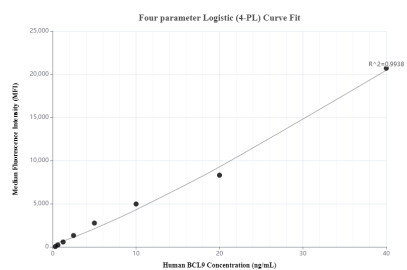
## Selected Validation Data



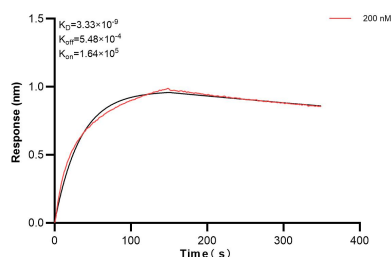
Sandwich ELISA standard curve of MP00739-4, Human BCL9 Recombinant Matched Antibody Pair - PBS only. 83760-6-PBS was coated to a plate as the capture antibody and incubated with serial dilutions of standard Ag19158. 83760-5-PBS was HRP conjugated as the detection antibody. Range: 78.1-5000 pg/mL.



The mean BCL9 concentration was determined to be 18.2 ng/mL in COLO 320 cell extract based on a 2.0 mg/mL extract load.



Cytometric bead array standard curve of MP00739-2, BCL9 Recombinant Matched Antibody Pair, PBS Only. Capture antibody: 83760-3-PBS. Detection antibody: 83760-5-PBS. Standard: Ag19158. Range: 0.313-40 ng/mL.



Biolayer interferometry (BLI) kinetic assay of 83760-5-PBS against Human BCL9 was performed. The affinity constant is 3.33 nM.