

For Research Use Only

# BCL9 Recombinant antibody, PBS Only (Capture)

Catalog Number: 83760-3-PBS



## Basic Information

Catalog Number:

83760-3-PBS

Concentration:

1 mg/ml

Source:

Rabbit

Isotype:

IgG

Immunogen Catalog Number:

AG19158

GenBank Accession Number:

BC116451

GeneID (NCBI):

607

UNIPROT ID:

O00512

Full Name:

B-cell CLL/lymphoma 9

Calculated MW:

1426 aa, 149 kDa

Purification Method:

Protein A purification

CloneNo.:

240682A9

## Applications

Tested Applications:

IF/ICC, FC (Intra), Cytometric bead array, Indirect ELISA

Species Specificity:

human

## Background Information

### Storage

Storage:

Store at -80°C.

The product is shipped with ice packs. Upon receipt, store it immediately at -80°C

Storage Buffer:

PBS Only

For technical support and original validation data for this product please contact:

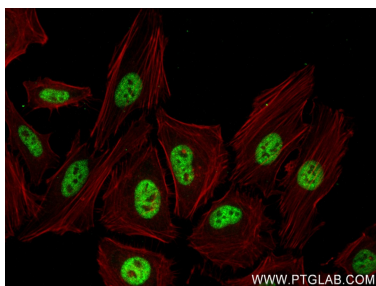
T: 4006900926

E: Proteintech-CN@ptglab.com

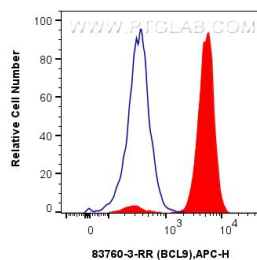
W: ptgcn.com

This product is exclusively available under Proteintech Group brand and is not available to purchase from any other manufacturer.

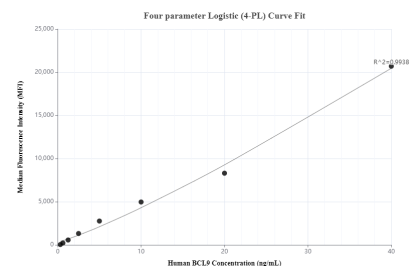
## Selected Validation Data



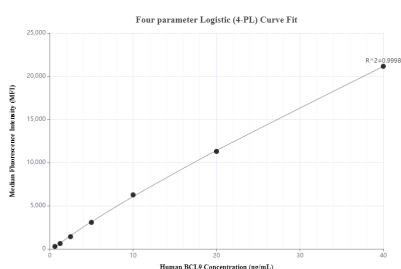
Immunofluorescent analysis of (4% PFA) fixed HeLa cells using BCL9 antibody (83760-3-RR, Clone: 240682A9) at dilution of 1:300 and CoraLite®488-Conjugated AffiniPure Goat Anti-Rabbit IgG(H+L) (SA00013-2), CL594-Phalloidin (red). This data was developed using the same antibody clone with 83760-3-PBS in a different storage buffer formulation.



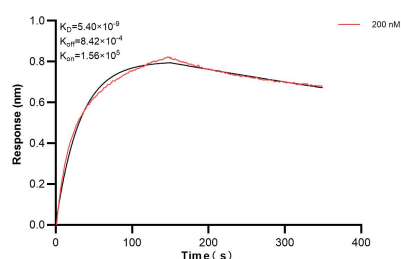
$1 \times 10^6$  SH-SY5Y cells were intracellularly stained with 0.25  $\mu$ g Bcl9 Recombinant Antibody (83760-3-RR, Clone: 240682A9) and APC-Conjugated AffiniPure Goat Anti-Rabbit IgG(H+L)(red), or 0.25  $\mu$ g Isotype Control (blue). Cells were fixed and permeabilized with True-Nuclear Transcription Factor Buffer Set. This data was developed using the same antibody clone with 83760-3-PBS in a different storage buffer formulation.



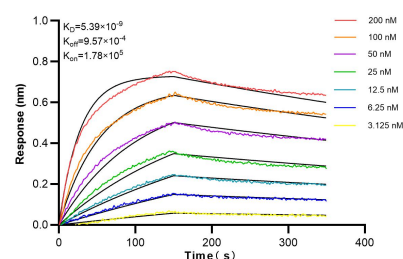
Cytometric bead array standard curve of MP00739-2, BCL9 Recombinant Matched Antibody Pair, PBS Only. Capture antibody: 83760-3-PBS. Detection antibody: 83760-5-PBS. Standard: Ag19158. Range: 0.313-40 ng/mL.



Cytometric bead array standard curve of MP00739-3, BCL9 Recombinant Matched Antibody Pair, PBS Only. Capture antibody: 83760-3-PBS. Detection antibody: 83760-4-PBS. Standard: Ag19158. Range: 0.625-40 ng/mL.



Biolayer interferometry (BLI) kinetic assay of 83760-3-PBS against Human BCL9 was performed. The affinity constant is 5.40 nM.



Biolayer interferometry (BLI) kinetic assays of 83760-3-RR against Human BCL9 were performed. The affinity constant is 5.39 nM.