

For Research Use Only

Rat AGER/RAGE Recombinant antibody, PBS Only (Capture/Detector)

Catalog Number: 83759-1-PBS



Basic Information

Catalog Number:

83759-1-PBS

Size:

1 mg/ml

Source:

Rabbit

Isotype:

IgG

GenBank Accession Number:

GeneID (NCBI):

81722

UNIPROT ID:

Q63495

Full Name:

advanced glycosylation end product-specific receptor

Calculated MW:

43 kDa

Purification Method:

Protein A purification

CloneNo.:

240706C1

Applications

Tested Applications:

Cytometric bead array, Sandwich ELISA, Indirect ELISA, Sample test

Species Specificity:

rat

Background Information

Storage

Storage:

Store at -80°C.

The product is shipped with ice packs. Upon receipt, store it immediately at -80°C

Storage Buffer:

PBS Only

For technical support and original validation data for this product please contact:

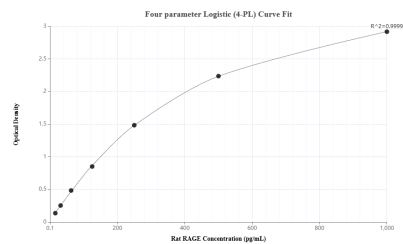
T: 4006900926

E: Proteintech-CN@ptglab.com

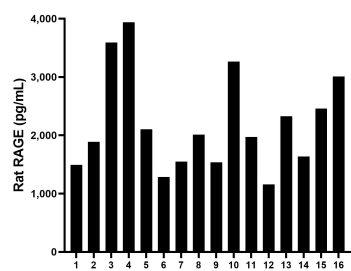
W: ptgcn.com

This product is exclusively available under Proteintech Group brand and is not available to purchase from any other manufacturer.

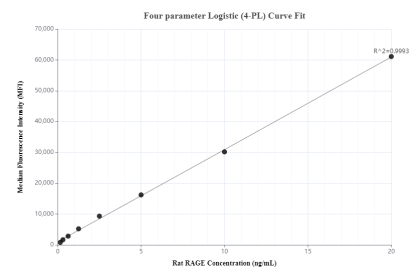
Selected Validation Data



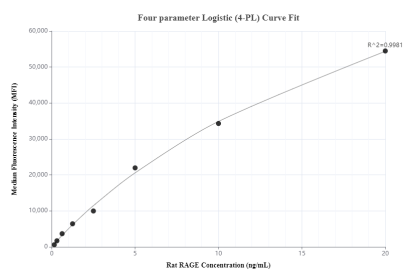
Sandwich ELISA standard curve of MP00734-1, Rat RAGE Recombinant Matched Antibody Pair - PBS only. 83759-2-PBS was coated to a plate as the capture antibody and incubated with serial dilutions of standard Eg1135. 83759-1-PBS was HRP conjugated as the detection antibody. Range: 15.6-1000 pg/mL



Serum of sixteen rats was measured. The rat RAGE concentration of detected samples was determined to be 2,201.2 pg/mL with a range of 1,157.8 - 3,936.9 pg/mL.



Cytometric bead array standard curve of MP00734-1, Rat AGER/RAGE Recombinant Matched Antibody Pair, PBS Only. Capture antibody: 83759-2-PBS. Detection antibody: 83759-1-PBS. Standard: Eg1135. Range: 0.156-20 ng/mL



Cytometric bead array standard curve of MP00734-2, Rat AGER/RAGE Recombinant Matched Antibody Pair, PBS Only. Capture antibody: 83759-1-PBS. Detection antibody: 83759-3-PBS. Standard: Eg1135. Range: 0.156-20 ng/mL