

For Research Use Only

# Cxcl2 Recombinant antibody

Catalog Number: 83758-1-RR



## Basic Information

**Catalog Number:**

83758-1-RR

**Concentration:**

1000 ug/ml

**Source:**

Rabbit

**Isotype:**

IgG

**GenBank Accession Number:**

NM\_053647.1

**GeneID (NCBI):**

114105

**UNIPROT ID:**

P30348

**Full Name:**

chemokine (C-X-C motif) ligand 2

**Calculated MW:**

11 kDa

**Observed MW:**

10 kDa

**Purification Method:**

Protein A purification

**CloneNo.:**

240367C5

**Recommended Dilutions:**

WB 1:500-1:2000

IF/ICC 1:50-1:500

## Applications

**Tested Applications:**

WB, IF/ICC, ELISA

**Species Specificity:**

human, mouse, rat

**Positive Controls:**

WB : LPS and Brefeldin A treated NR8383 cells,

IF/ICC : PMA, LPS and Brefeldin A treated THP-1 cells,

## Background Information

CXCL2 is a member of the CXC subfamily, which encodes secreted proteins involved in immunoregulatory and inflammatory processes. CXCL2 is expressed at sites of inflammation and may suppress hematopoietic progenitor cell proliferation. CXCL2 plays a critical role in maintaining cancer-induced macrophage infiltration and the resulting mechanical hypersensitivity and persistent spontaneous nociception (PMID: 36754246).

## Storage

**Storage:**

Store at -20°C. Stable for one year after shipment.

**Storage Buffer:**

PBS with 0.02% sodium azide and 50% glycerol pH 7.3.

Aliquoting is unnecessary for -20°C storage

For technical support and original validation data for this product please contact:

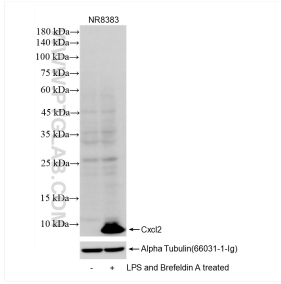
T: 4006900926

E: Proteintech-CN@ptglab.com

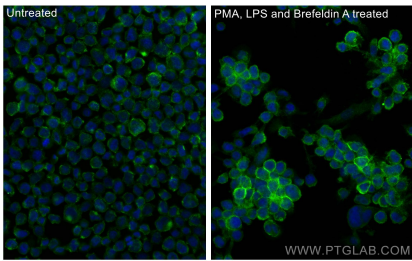
W: ptgcn.com

This product is exclusively available under Proteintech Group brand and is not available to purchase from any other manufacturer.

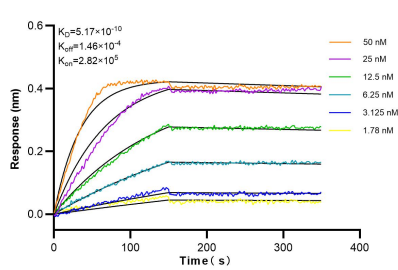
## Selected Validation Data



LPS and Brefeldin A treated NR8383 cells were subjected to SDS PAGE followed by western blot with 83758-1-RR (Cxcl2 antibody) at dilution of 1:1000 incubated at room temperature for 1.5 hours.



Immunofluorescent analysis of (4% PFA) fixed PMA, LPS and Brefeldin A treated THP-1 cells using Cxcl2 antibody (83758-1-RR, Clone: 240367C5) at dilution of 1:200 and CoraLite®488-Conjugated Goat Anti-Rabbit IgG(H+L) (SA00013-2).



Biolayer interferometry (BLI) kinetic assays of 83758-1-RR against Mouse Cxcl2 were performed. The affinity constant is 0.517 nM.