

For Research Use Only

# GBP1 Recombinant antibody, PBS Only (Detector)

Catalog Number: 83751-4-PBS



## Basic Information

Catalog Number:

83751-4-PBS

Size:

1 mg/ml

Source:

Rabbit

Isotype:

IgG

Immunogen Catalog Number:

AG7562

GenBank Accession Number:

BC002666

GeneID (NCBI):

2633

UNIPROT ID:

P32455

Full Name:

GTP binding protein 1

Calculated MW:

68 kDa

Purification Method:

Protein A purification

CloneNo.:

240634D12

## Applications

Tested Applications:

Cytometric bead array, Sandwich ELISA, Indirect ELISA,  
Sample test

Species Specificity:

human

## Background Information

### Storage

Storage:

Store at -80°C.

**The product is shipped with ice packs. Upon receipt, store it immediately at -80°C**

Storage Buffer:

PBS Only

For technical support and original validation data for this product please contact:

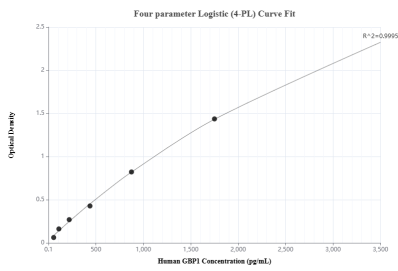
T: 4006900926

E: [Proteintech-CN@ptglab.com](mailto:Proteintech-CN@ptglab.com)

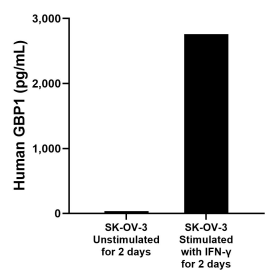
W: [ptgcn.com](http://ptgcn.com)

**This product is exclusively available under Proteintech Group brand and is not available to purchase from any other manufacturer.**

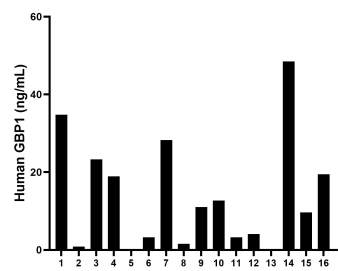
Selected Validation Data



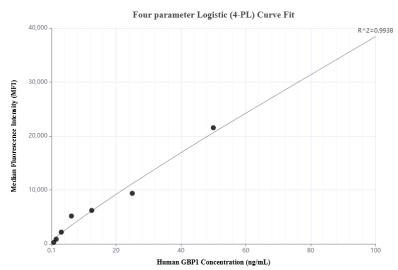
Sandwich ELISA standard curve of MP00707-4, Human GBP1 Recombinant Matched Antibody Pair - PBS only. 83751-2-PBS was coated to a plate as the capture antibody and incubated with serial dilutions of standard Ag7562. 83751-4-PBS was HRP conjugated as the detection antibody. Range: 54.68-3500 pg/mL



SK-OV-3 cells were cultured in DMEM supplemented with 10% fetal bovine serum, 2.5 mM L-glutamine, 100 U/mL penicilin, and 100 µg/mL streptomycin sulfate. Cells were stimulated with 1000 U/ml recombinant human IFN-γ for 48h. An aliquot of the cell culture supernatants was removed, assayed for human GBP1.



Serum of eight individual healthy human donors was measured. The human GBP1 concentration of detected samples was determined to be 14.66 ng/mL with a range of 0.29 - 48.49 ng/mL



Cytometric bead array standard curve of MP00707-3, GBP1 Recombinant Matched Antibody Pair, PBS Only. Capture antibody: 83751-5-PBS. Detection antibody: 83751-4-PBS. Standard: Ag7562. Range: 0.78-100 ng/mL