

For Research Use Only

CKMT1A Recombinant antibody

Catalog Number: 83750-4-RR



Basic Information

Catalog Number: 83750-4-RR	GenBank Accession Number: BC001926	Purification Method: Protein A purification
Size: 1000 µg/ml	GeneID (NCBI): 548596	CloneNo.: 240825A4
Source: Rabbit	UNIPROT ID: P12532	Recommended Dilutions: WB 1:2000-1:10000
Isotype: IgG	Full Name: creatine kinase, mitochondrial 1A	
Immunogen Catalog Number: AG7583	Calculated MW: 47 kDa	
	Observed MW: 45 kDa	

Applications

Tested Applications: WB, ELISA	Positive Controls: WB : HEK-293T cells, HepG2 cells, SH-SY5Y cells, mouse heart tissue, rat heart tissue
Species Specificity: human, mouse, rat	

Background Information

CKMT1A (Creatine kinase U-type, mitochondrial) is also named CKMT and belongs to the ATP:guanido phosphotransferase family. CKMT1A is a nearly identical copy of the CKMT1B gene. Both genes encode an identical CKMT1 protein (PMID:17098888). It reversibly catalyzes the transfer of phosphate between ATP and various phosphates. It has 2 isoforms produced by alternative splicing with the molecular weight of 47 kDa and 50 kDa.

Storage

Storage:
Store at -20°C. Stable for one year after shipment.
Storage Buffer:
PBS with 0.02% sodium azide and 50% glycerol pH 7.3.
Aliquoting is unnecessary for -20°C storage

For technical support and original validation data for this product please contact:

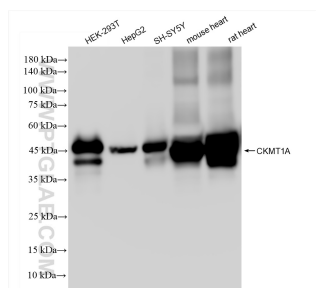
T: 4006900926

E: Proteintech-CN@ptglab.com

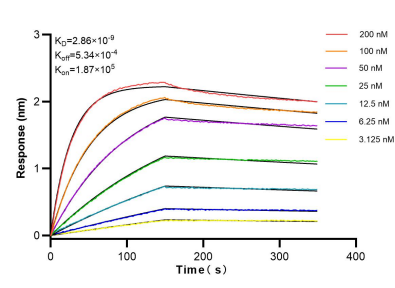
W: ptgcn.com

This product is exclusively available under Proteintech Group brand and is not available to purchase from any other manufacturer.

Selected Validation Data



Various lysates were subjected to SDS PAGE followed by western blot with 83750-4-RR (CKMT1A antibody) at dilution of 1:5000 incubated at room temperature for 1.5 hours.



Biolayer interferometry (BLI) kinetic assays of 83750-4-RR against Human CKMT1A were performed. The affinity constant is 2.86 nM.