

For Research Use Only

Mouse RAGE Recombinant antibody, PBS Only (Capture/Detector)

Catalog Number: 83742-4-PBS



Basic Information

Catalog Number:

83742-4-PBS

Size:

1 mg/ml

Source:

Rabbit

Isotype:

IgG

GenBank Accession Number:

NM_007425.3

GeneID (NCBI):

11596

UNIPROT ID:

Q62151-1

Full Name:

advanced glycosylation end product-specific receptor

Calculated MW:

43 kDa

Purification Method:

Protein A purification

CloneNo.:

240774H4

Applications

Tested Applications:

Cytometric bead array, Sandwich ELISA, Indirect ELISA, Sample test

Species Specificity:

mouse

Background Information

Storage

Storage:

Store at -80°C.

The product is shipped with ice packs. Upon receipt, store it immediately at -80°C

Storage Buffer:

PBS Only

For technical support and original validation data for this product please contact:

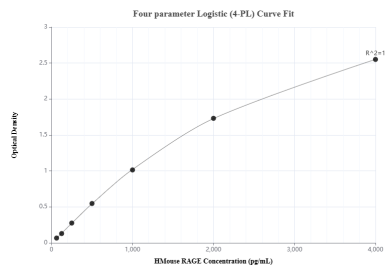
T: 4006900926

E: Proteintech-CN@ptglab.com

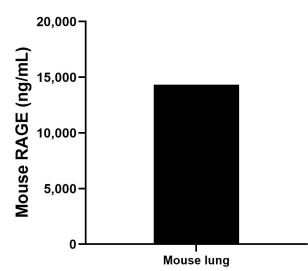
W: ptgcn.com

This product is exclusively available under Proteintech Group brand and is not available to purchase from any other manufacturer.

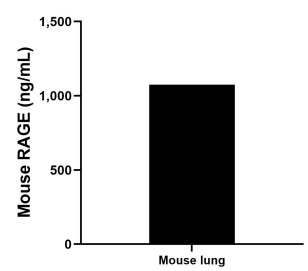
Selected Validation Data



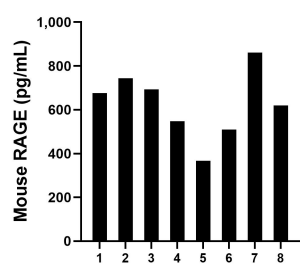
Sandwich ELISA standard curve of MP00693-4, Human RAGE Recombinant Matched Antibody Pair - PBS only. 83742-6-PBS was coated to a plate as the capture antibody and incubated with serial dilutions of standard Eg0873. 83742-4-PBS was HRP conjugated as the detection antibody. Range: 62.5-4000 pg/mL



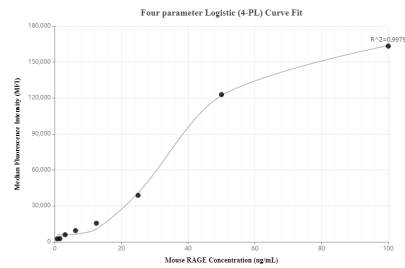
The mean RAGE concentration was determined to be 14,337.96 ng/mL in mouse lung tissue extract based on a 3.8 mg/mL extract load.



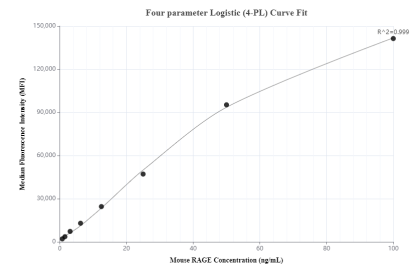
Mouse lung tissue was cultured in RPMI supplemented with 10% fetal bovine serum for 5 days. An aliquot of the cell culture supernate was removed, assayed for mouse RAGE and measured 1,075.53 ng/mL



Serum of eight mice was measured. The mouse RAGE concentration of detected samples was determined to be 627.1 pg/mL with a range of 366.3 - 860.7 pg/mL



Cytometric bead array standard curve of MP00693-2, Mouse RAGE Recombinant Matched Antibody Pair, PBS Only. Capture antibody: 83742-4-PBS. Detection antibody: 83742-1-PBS. Standard: Eg0873. Range: 0.78-100 ng/mL



Cytometric bead array standard curve of MP00693-3, Mouse RAGE Recombinant Matched Antibody Pair, PBS Only. Capture antibody: 83742-3-PBS. Detection antibody: 83742-4-PBS. Standard: Eg0873. Range: 0.78-100 ng/mL