

For Research Use Only

Rat C-reactive protein Recombinant antibody, PBS Only (Detector)

Catalog Number: 83741-4-PBS



Basic Information

Catalog Number:

83741-4-PBS

Size:

1 mg/ml

Source:

Rabbit

Isotype:

IgG

GenBank Accession Number:

NM_017096.3

GeneID (NCBI):

25419

UNIPROT ID:

P48199

Full Name:

C-reactive protein, pentraxin-related

Calculated MW:

25 kDa

Purification Method:

Protein A purification

CloneNo.:

240759F6

Applications

Tested Applications:

Sandwich ELISA, Indirect ELISA, Sample test

Species Specificity:

rat

Background Information

Storage

Storage:

Store at -80°C.

The product is shipped with ice packs. Upon receipt, store it immediately at -80°C

Storage Buffer:

PBS Only

For technical support and original validation data for this product please contact:

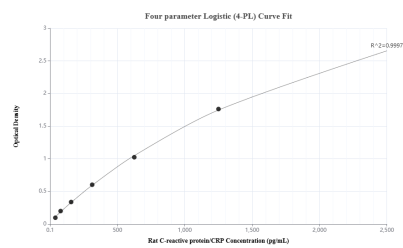
T: 4006900926

E: Proteintech-CN@ptglab.com

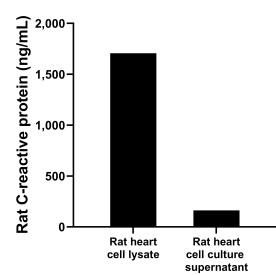
W: ptgcn.com

This product is exclusively available under Proteintech Group brand and is not available to purchase from any other manufacturer.

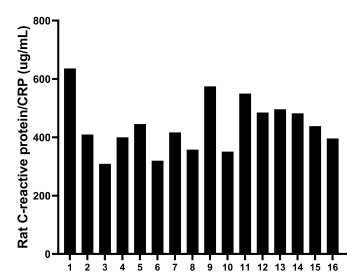
Selected Validation Data



Sandwich ELISA standard curve of MP00692-2, Rat C-reactive protein/CRP Recombinant Matched Antibody Pair - PBS only. 83741-5-PBS was coated to a plate as the capture antibody and incubated with serial dilutions of standard Eg0942. 83741-4-PBS was HRP conjugated as the detection antibody. Range: 39.1-2500 pg/mL



Rat heart, cut into 1-2 mm pieces, was cultured in 25-30 mL of RPMI supplemented with 10% fetal bovine serum. The cell culture supernatant was removed, assayed for rat C-reactive protein, and measured 161.65 ng/mL. Cells were lysed, assayed for rat C-reactive protein, and measured 1,706.04 ng/mL.



Serum of sixteen rats was measured. The rat C-reactive protein/CRP concentration of detected samples was determined to be 441.8 ug/mL with a range of 309.02 - 635.99 ug/mL.