

For Research Use Only

# Mouse CX3CL1 Recombinant antibody, PBS Only (Detector)

Catalog Number: 83738-2-PBS



## Basic Information

Catalog Number:	83738-2-PBS	GenBank Accession Number:	NM_009142.3	Purification Method:	Protein A purification
Concentration:	1000 ug/ml	GeneID (NCBI):	20312	CloneNo.:	240738E4
Source:	Rabbit	UNIPROT ID:	O35188		
Isotype:	IgG	Full Name:	chemokine (C-X3-C motif) ligand 1		
Immunogen Catalog Number:	EG0704	Calculated MW:	42 kDa		

## Applications

**Tested Applications:**  
Cytometric bead array, Sandwich ELISA, Indirect ELISA,  
Sample test

**Species Specificity:**  
mouse

## Background Information

### Storage

**Storage:**  
Store at -80°C.  
**The product is shipped with ice packs. Upon receipt, store it immediately at -80°C**

**Storage Buffer:**  
PBS only, pH7.3

For technical support and original validation data for this product please contact:

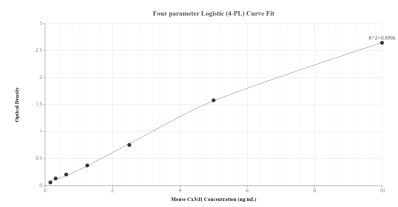
T: 4006900926

E: [Proteintech-CN@ptglab.com](mailto:Proteintech-CN@ptglab.com)

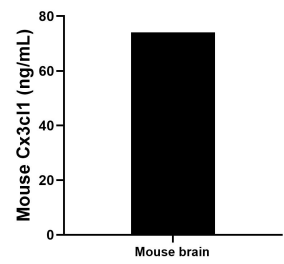
W: [ptgcn.com](http://ptgcn.com)

**This product is exclusively available under Proteintech Group brand and is not available to purchase from any other manufacturer.**

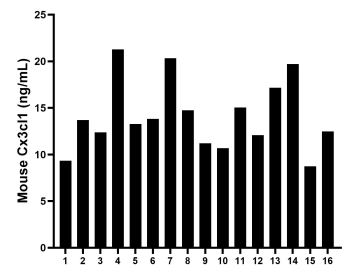
Selected Validation Data



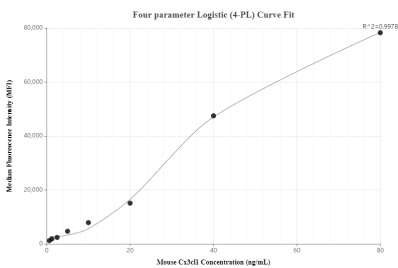
Sandwich ELISA standard curve of MP00688-1, Mouse Cx3cl1 Recombinant Matched Antibody Pair - PBS only. 83738-4-PBS was coated to a plate as the capture antibody and incubated with serial dilutions of standard Eg0704. 83738-2-PBS was HRP conjugated as the detection antibody. Range: 0.156-10 ng/mL



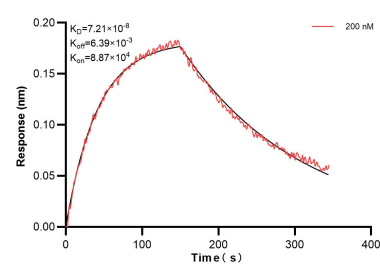
The mean mouse Cx3cl1 concentration was determined to be 74.07 ng/mL in mouse brain tissue extract based on a 6.0 mg/mL extract load.



Serum of sixteen mice was measured. The Cx3cl1 concentration of detected samples was determined to be 14.12 ng/mL with a range of 8.73 - 21.28 ng/mL.



Cytometric bead array standard curve of MP00688-1, MOUSE CX3CL1 Recombinant Matched Antibody Pair, PBS Only. Capture antibody: 83738-4-PBS. Detection antibody: 83738-2-PBS. Standard: Eg0704. Range: 0.625-80 ng/mL



Biolayer interferometry (BLI) kinetic assays of 83738-2-PBS against Mouse CX3CL1 was performed. The affinity constant is 72.1 nM.