

For Research Use Only

ARID1A Recombinant antibody, PBS Only (Capture)

Catalog Number: 83733-3-PBS



Basic Information

Catalog Number: 83733-3-PBS	GenBank Accession Number: NM_006015	Purification Method: Protein A purification
Size: 1 mg/ml	GeneID (NCBI): 8289	CloneNo.: 240690F1
Source: Rabbit	UNIPROT ID: O14497	
Isotype: IgG	Full Name: AT rich interactive domain 1A (SWI-like)	
Immunogen Catalog Number: AG30749	Calculated MW: 242 kDa	
	Observed MW: 250-260 kDa	

Applications

Tested Applications:
WB, IHC, IF/ICC, Cytometric bead array, Indirect ELISA

Species Specificity:
human

Background Information

ARID1A, also named as BAF250, BAF250A, C1orf4, OSA1 and SMARCF1, is involved in transcriptional activation and repression of select genes by chromatin remodeling (alteration of DNA-nucleosome topology). It binds DNA non-specifically. It is also involved in vitamin D-coupled transcription regulation via its association with the WINAC complex, a chromatin-remodeling complex recruited by vitamin D receptor (VDR), which is required for the ligand-bound VDR-mediated transrepression of the CYP27B1 gene. ARID1A belongs to the neural progenitors-specific chromatin remodeling complex (npBAF complex) and the neuron-specific chromatin remodeling complex (nBAF complex). During neural development a switch from a stem/progenitor to a post-mitotic chromatin remodeling mechanism occurs as neurons exit the cell cycle and become committed to their adult state. The antibody is specific to ARID1A.

Storage

Storage:
Store at -80°C.
The product is shipped with ice packs. Upon receipt, store it immediately at -80°C

Storage Buffer:
PBS Only

For technical support and original validation data for this product please contact:

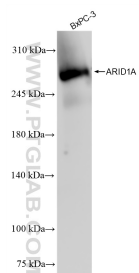
T: 4006900926

E: Proteintech-CN@ptglab.com

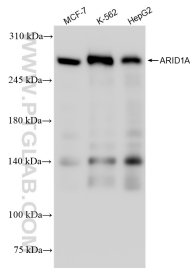
W: ptgcn.com

This product is exclusively available under Proteintech Group brand and is not available to purchase from any other manufacturer.

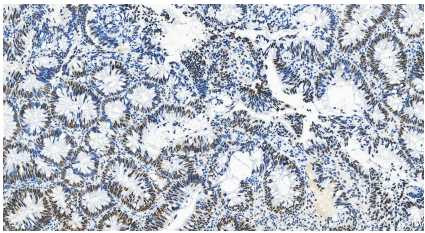
Selected Validation Data



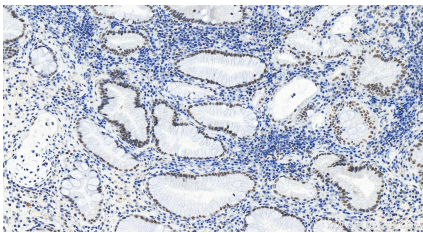
BxPC-3 cells were subjected to SDS PAGE followed by western blot with 83733-3-RR (ARID1A antibody) at dilution of 1:10000 incubated at room temperature for 1.5 hours. This data was developed using the same antibody clone with 83733-3-PBS in a different storage buffer formulation.



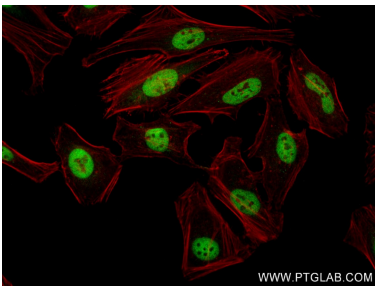
Various lysates were subjected to SDS PAGE followed by western blot with 83733-3-RR (ARID1A antibody) at dilution of 1:10000 incubated at room temperature for 1.5 hours. This data was developed using the same antibody clone with 83733-3-PBS in a different storage buffer formulation.



Immunohistochemical analysis of paraffin-embedded human colon cancer tissue slide using 83733-3-RR (ARID1A antibody) at dilution of 1:200 (under 20x lens). Heat mediated antigen retrieval with Tris-EDTA buffer (pH 9.0). This data was developed using the same antibody clone with 83733-3-PBS in a different storage buffer formulation.



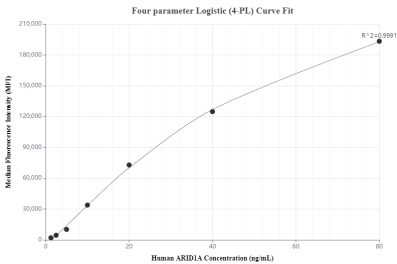
Immunohistochemical analysis of paraffin-embedded human stomach cancer tissue slide using 83733-3-RR (ARID1A antibody) at dilution of 1:400 (under 20x lens). Heat mediated antigen retrieval with Tris-EDTA buffer (pH 9.0). This data was developed using the same antibody clone with 83733-3-PBS in a different storage buffer formulation.



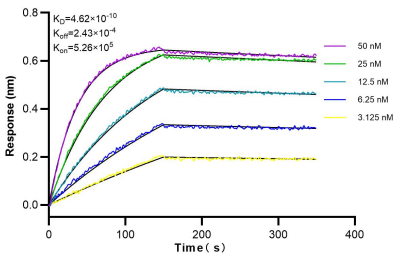
Immunofluorescent analysis of (4% PFA) fixed HeLa cells using ARID1A antibody (83733-3-RR, Clone: 240690F1) at dilution of 1:300 and Coralite®488-Conjugated AffiniPure Goat Anti-Rabbit IgG(H+L) (SA00013-2), CL594-Phalloidin (red). This data was developed using the same antibody clone with 83733-3-PBS in a different storage buffer formulation.



Immunofluorescent analysis of (4% PFA) fixed HeLa cells using ARID1A antibody (83733-3-RR, Clone: 240690F1) at dilution of 1:300 and Coralite®488-Conjugated AffiniPure Goat Anti-Rabbit IgG(H+L) (SA00013-2), CL594-Phalloidin (red). This data was developed using the same antibody clone with 83733-3-PBS in a different storage buffer formulation.



Cytometric bead array standard curve of MP00714-2, ARID1A Recombinant Matched Antibody Pair, PBS Only. Capture antibody: 83733-3-PBS. Detection antibody: 83733-2-PBS. Standard: Ag30749. Range: 1.25 -80 ng/mL.



Biolayer interferometry (BLI) kinetic assays of 83733-3-RR against Human ARID1A were performed. The affinity constant is 0.462 nM.