

For Research Use Only

POT1 Recombinant antibody, PBS Only (Capture)



Catalog Number: 83732-4-PBS

Basic Information

Catalog Number: 83732-4-PBS	GenBank Accession Number: BC002923	Purification Method: Protein A purification
Size: 1 mg/ml	GeneID (NCBI): 25913	CloneNo.: 240688G4
Source: Rabbit	UNIPROT ID: Q9NUX5	
Isotype: IgG	Full Name: POT1 protection of telomeres 1 homolog (S. pombe)	
Immunogen Catalog Number: AG0875	Calculated MW: 71 kDa	

Applications

Tested Applications:
Indirect ELISA, Cytometric bead array

Species Specificity:
Human

Background Information

Storage

Storage:
Store at -80°C.
The product is shipped with ice packs. Upon receipt, store it immediately at -80°C

Storage Buffer:
PBS Only

For technical support and original validation data for this product please contact:

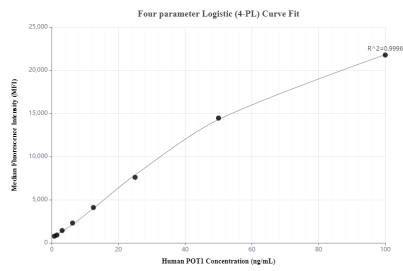
T: 4006900926

E: Proteintech-CN@ptglab.com

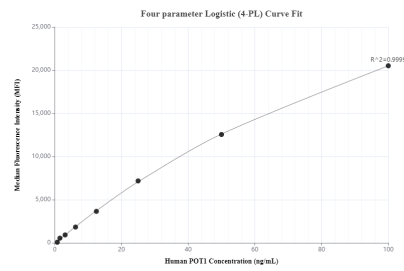
W: ptgcn.com

This product is exclusively available under Proteintech Group brand and is not available to purchase from any other manufacturer.

Selected Validation Data



Cytometric bead array standard curve of MP00711-1, POT1 Recombinant Matched Antibody Pair, PBS Only. Capture antibody: 83732-4-PBS. Detection antibody: 83732-2-PBS. Standard: Ag0875. Range: 0.78-100 ng/mL



Cytometric bead array standard curve of MP00711-2, POT1 Recombinant Matched Antibody Pair, PBS Only. Capture antibody: 83732-4-PBS. Detection antibody: 83732-3-PBS. Standard: Ag0875. Range: 0.78-100 ng/mL