

For Research Use Only

CLIC2 Recombinant antibody, PBS Only (Detector)

Catalog Number: 83730-3-PBS



Basic Information

Catalog Number:

83730-3-PBS

Size:

1 mg/ml

Source:

Rabbit

Isotype:

IgG

Immunogen Catalog Number:

AG6766

GenBank Accession Number:

BC005367

GeneID (NCBI):

1193

UNIPROT ID:

O15247

Full Name:

chloride intracellular channel 2

Calculated MW:

28 kDa

Purification Method:

Protein A purification

CloneNo.:

240726D1

Applications

Tested Applications:

WB, Cytometric bead array, Indirect ELISA

Species Specificity:

human

Background Information

Storage

Storage:

Store at -80°C.

The product is shipped with ice packs. Upon receipt, store it immediately at -80°C

Storage Buffer:

PBS Only

For technical support and original validation data for this product please contact:

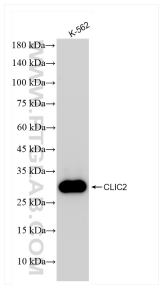
T: 4006900926

E: Proteintech-CN@ptglab.com

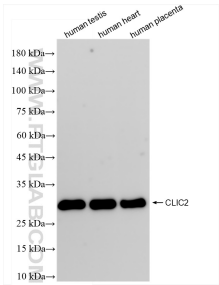
W: ptgcn.com

This product is exclusively available under Proteintech Group brand and is not available to purchase from any other manufacturer.

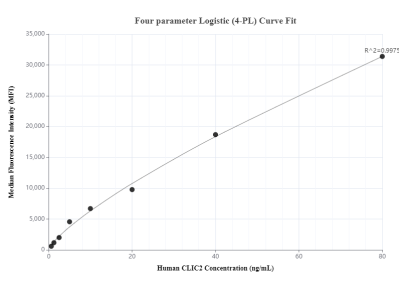
Selected Validation Data



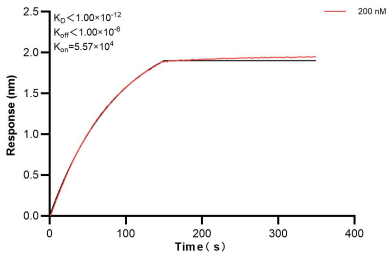
K-562 cells were subjected to SDS PAGE followed by western blot with 83730-3-RR (CLIC2 antibody) at dilution of 1:10000 incubated at room temperature for 1.5 hours. This data was developed using the same antibody clone with 83730-3-PBS in a different storage buffer formulation.



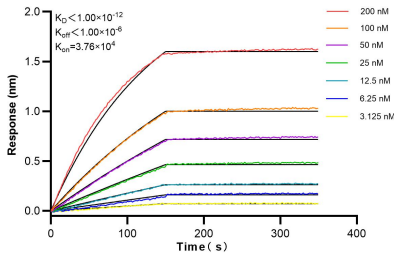
Various lysates were subjected to SDS PAGE followed by western blot with 83730-3-RR (CLIC2 antibody) at dilution of 1:10000 incubated at room temperature for 1.5 hours. This data was developed using the same antibody clone with 83730-3-PBS in a different storage buffer formulation.



Cytometric bead array standard curve of MP00715-1, CLIC2 Recombinant Matched Antibody Pair, PBS Only. Capture antibody: 83730-1-PBS. Detection antibody: 83730-3-PBS. Standard: Ag6766. Range: 0.625-80 ng/mL.



Biolayer interferometry (BLI) kinetic assay of 83730-3-PBS against Human CLIC2 was performed. The affinity constant is below 1 pM.



Biolayer interferometry (BLI) kinetic assays of 83730-3-RR against Human CLIC2 were performed. The affinity constant is below 1 pM.