

For Research Use Only

SIRP Alpha/CD172a Recombinant antibody, PBS Only (Capture)

Catalog Number: 83729-1-PBS



Basic Information

Catalog Number:

83729-1-PBS

Size:

1 mg/ml

Source:

Rabbit

Isotype:

IgG

GenBank Accession Number:

NM_080792

GeneID (NCBI):

140885

UNIPROT ID:

P78324

Full Name:

signal-regulatory protein alpha

Calculated MW:

55 kDa

Purification Method:

Protein A purification

CloneNo.:

240789D4

Applications

Tested Applications:

Cytometric bead array, Sandwich ELISA, Indirect ELISA, Sample test

Species Specificity:

human

Background Information

Storage

Storage:

Store at -80°C.

The product is shipped with ice packs. Upon receipt, store it immediately at -80°C

Storage Buffer:

PBS Only

For technical support and original validation data for this product please contact:

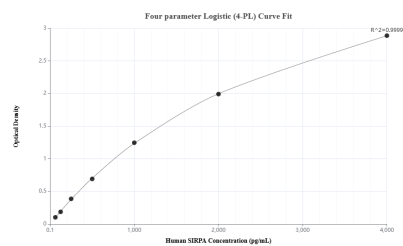
T: 4006900926

E: Proteintech-CN@ptglab.com

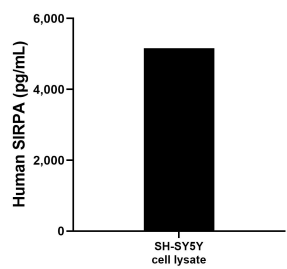
W: ptgcn.com

This product is exclusively available under Proteintech Group brand and is not available to purchase from any other manufacturer.

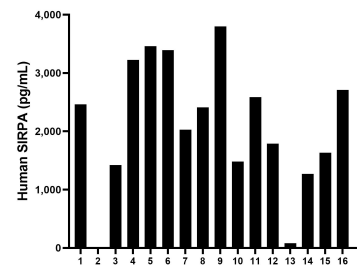
Selected Validation Data



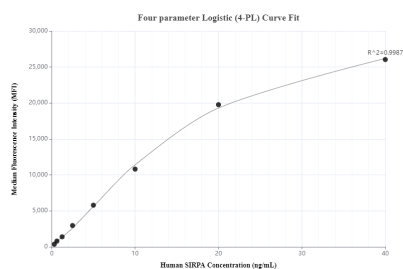
Sandwich ELISA standard curve of MP00713-1, Human SIRPA Recombinant Matched Antibody Pair - PBS only. 83729-1-PBS was coated to a plate as the capture antibody and incubated with serial dilutions of standard Eg0625. 83729-4-PBS was HRP conjugated as the detection antibody. Range: 62.5-4000 pg/mL



SH-SY5Y cell lysate was measured. The human SIRPA concentration of detected samples was determined to be 5,156.59 pg/mL.



Serum of sixteen humans was measured. The human SIRPA concentration of detected samples was determined to be 2,250 pg/mL with a range of 79.96 - 3,800.09 pg/mL.



Cytometric bead array standard curve of MP00713-1, SIRP Alpha Recombinant Matched Antibody Pair, PBS Only. Capture antibody: 83729-1-PBS. Detection antibody: 83729-4-PBS. Standard: Eg0625. Range: 0.313-40 ng/mL