

For Research Use Only

# ApoE Recombinant antibody

Catalog Number: 83728-4-RR



## Basic Information

### Catalog Number:

83728-4-RR

### Size:

1000 ug/ml

### Source:

Rabbit

### Isotype:

IgG

### GenBank Accession Number:

NM\_001305819.1

### GeneID (NCBI):

11816

### UNIPROT ID:

P08226

### Full Name:

Apolipoprotein E

### Calculated MW:

36kDa

### Observed MW:

36 kDa

### Purification Method:

Protein A purification

### CloneNo.:

240786C3

### Recommended Dilutions:

WB 1:5000-1:50000

IHC 1:300-1:1200

IF/ICC 1:125-1:500

## Applications

### Tested Applications:

WB, IHC, IF/ICC, ELISA

### Species Specificity:

mouse, rat

**Note-IHC: suggested antigen retrieval with TE buffer pH 9.0; (\*) Alternatively, antigen retrieval may be performed with citrate buffer pH 6.0**

### Positive Controls:

**WB** : mouse liver tissue, mouse serum, mouse brain tissue

**IHC** : mouse brain tissue, mouse liver tissue, rat cerebellum tissue

**IF/ICC** : HepG2 cells,

## Background Information

Apolipoprotein E (ApoE) is a core component of plasma lipoproteins that participates in diverse biological processes, including plasma lipoprotein metabolism, intracellular cholesterol utilization, cell growth, immunoregulation, and neuronal growth and repair (PMID: 17854398). Mouse apoE, like apoE4, contains the equivalent of Arg-112 and Glu-255, but lacks the critical Arg-61 equivalent (it contains Thr-61). Thus, mouse apoE does not display apoE4 domain interaction (PMID: 11553788).

## Storage

### Storage:

Store at -20°C. Stable for one year after shipment.

### Storage Buffer:

PBS with 0.02% sodium azide and 50% glycerol pH 7.3.

Aliquoting is unnecessary for -20°C storage

For technical support and original validation data for this product please contact:

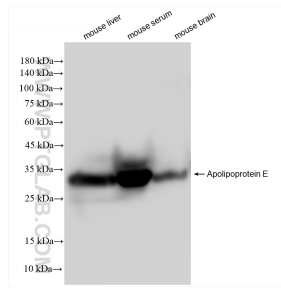
T: 4006900926

E: [Proteintech-CN@ptglab.com](mailto:Proteintech-CN@ptglab.com)

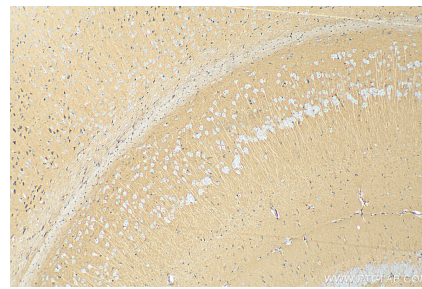
W: [ptgcn.com](http://ptgcn.com)

**This product is exclusively available under Proteintech Group brand and is not available to purchase from any other manufacturer.**

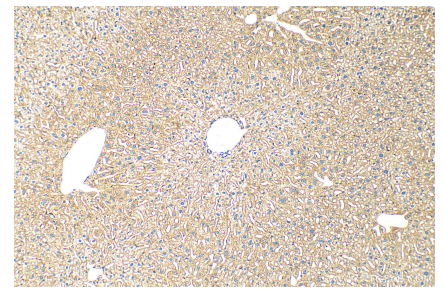
## Selected Validation Data



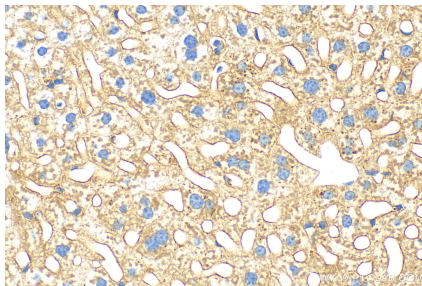
Various lysates were subjected to SDS PAGE followed by western blot with 83728-4-RR (ApoE antibody) at dilution of 1:10000 incubated at room temperature for 1.5 hours.



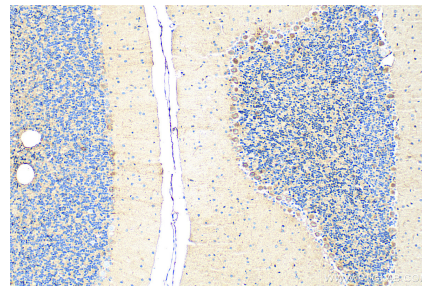
Immunohistochemical analysis of paraffin-embedded mouse brain tissue slide using 83728-4-RR (Apolipoprotein E antibody) at dilution of 1:600 (under 10x lens). Heat mediated antigen retrieval with Tris-EDTA buffer (pH 9.0).



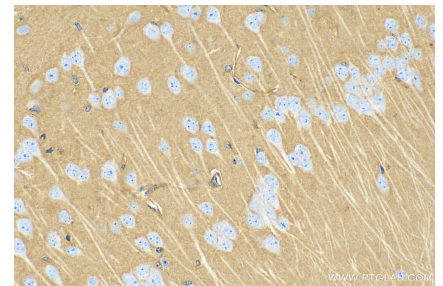
Immunohistochemical analysis of paraffin-embedded mouse liver tissue slide using 83728-4-RR (Apolipoprotein E antibody) at dilution of 1:600 (under 10x lens). Heat mediated antigen retrieval with Tris-EDTA buffer (pH 9.0).



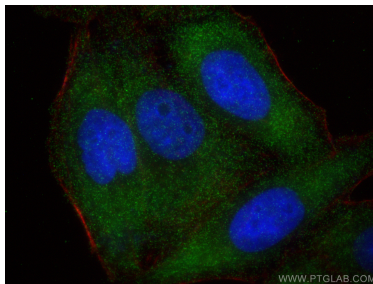
Immunohistochemical analysis of paraffin-embedded mouse liver tissue slide using 83728-4-RR (Apolipoprotein E antibody) at dilution of 1:600 (under 40x lens). Heat mediated antigen retrieval with Tris-EDTA buffer (pH 9.0).



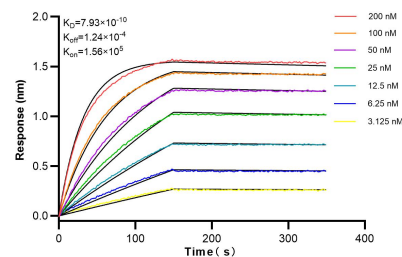
Immunohistochemical analysis of paraffin-embedded rat cerebellum tissue slide using 83728-4-RR (Apolipoprotein E antibody) at dilution of 1:600 (under 10x lens). Heat mediated antigen retrieval with Tris-EDTA buffer (pH 9.0).



Immunohistochemical analysis of paraffin-embedded mouse brain tissue slide using 83728-4-RR (Apolipoprotein E antibody) at dilution of 1:600 (under 40x lens). Heat mediated antigen retrieval with Tris-EDTA buffer (pH 9.0).



Immunofluorescent analysis of (-20°C Ethanol) fixed HepG2 cells using ApoE antibody (83728-4-RR, Clone: 240786C3) at dilution of 1:250 and Multi-rAb CoraLite® Plus 488-Goat Anti-Rabbit Recombinant Secondary Antibody (H+L) (RGAR002), CL594-Phalloidin (red).



Biolayer interferometry (BLI) kinetic assays of 83728-4-RR against Mouse Apolipoprotein E were performed. The affinity constant is 0.793 nM.