

For Research Use Only

Mouse Apolipoprotein E Recombinant antibody, PBS Only (Detector)

Catalog Number: 83728-1-PBS



Basic Information

Catalog Number:

83728-1-PBS

Size:

1 mg/ml

Source:

Rabbit

Isotype:

IgG

GenBank Accession Number:

NM_001305819.1

GeneID (NCBI):

11816

UNIPROT ID:

P08226

Full Name:

Apolipoprotein E

Calculated MW:

36kDa

Purification Method:

Protein A purification

CloneNo.:

240786C6

Applications

Tested Applications:

Cytometric bead array, Sandwich ELISA, Indirect ELISA, Sample test

Species Specificity:

mouse

Background Information

Storage

Storage:

Store at -80°C.

The product is shipped with ice packs. Upon receipt, store it immediately at -80°C

Storage Buffer:

PBS Only

For technical support and original validation data for this product please contact:

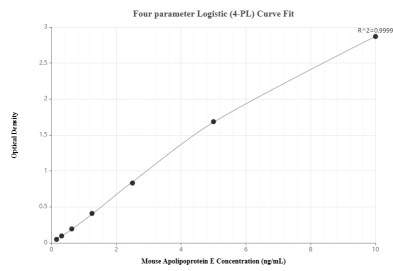
T: 4006900926

E: Proteintech-CN@ptglab.com

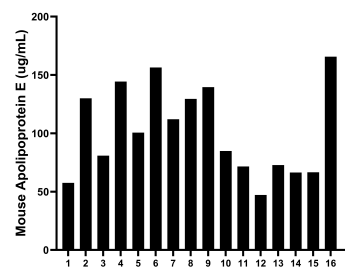
W: ptgcn.com

This product is exclusively available under Proteintech Group brand and is not available to purchase from any other manufacturer.

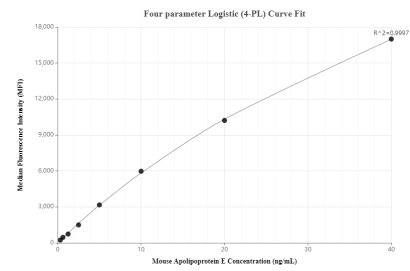
Selected Validation Data



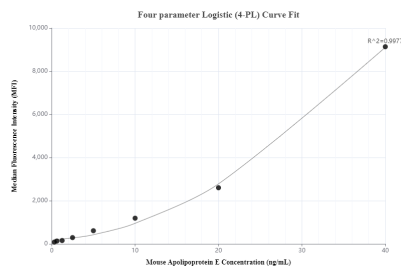
Sandwich ELISA standard curve of MP00712-1, Mouse Apolipoprotein E Recombinant Matched Antibody Pair - PBS only. 83728-3-PBS was coated to a plate as the capture antibody and incubated with serial dilutions of standard Eg0941. 83728-1-PBS was HRP conjugated as the detection antibody. Range: 0.16-10 ng/mL



Serum of sixteen mice was measured. The Apolipoprotein E concentration of detected samples was determined to be 101.6 μ g/mL with a range of 47.2 - 165.7 μ g/mL



Cytometric bead array standard curve of MP00712-1, MOUSE Apoe Recombinant Matched Antibody Pair, PBS Only. Capture antibody: 83728-3-PBS. Detection antibody: 83728-1-PBS. Standard: Eg1093. Range: 0.313-40 ng/mL



Cytometric bead array standard curve of MP00712-2, MOUSE Apoe Recombinant Matched Antibody Pair, PBS Only. Capture antibody: 83728-2-PBS. Detection antibody: 83728-1-PBS. Standard: Eg1093. Range: 0.313-40 ng/mL