

For Research Use Only

# VEGF-C Recombinant antibody, PBS Only (Capture/Detector)

Catalog Number: 83727-3-PBS



## Basic Information

Catalog Number:

83727-3-PBS

Size:

1 mg/ml

Source:

Rabbit

Isotype:

IgG

GenBank Accession Number:

BC035212

GeneID (NCBI):

7424

UNIPROT ID:

P49767

Full Name:

vascular endothelial growth factor C

Calculated MW:

419 aa, 47 kDa

Purification Method:

Protein A purification

CloneNo.:

240772C1

## Applications

Tested Applications:

Cytometric bead array, Sandwich ELISA, Indirect ELISA,  
Sample test

Species Specificity:

human

## Background Information

### Storage

Storage:

Store at -80°C.

**The product is shipped with ice packs. Upon receipt, store it immediately at -80°C**

Storage Buffer:

PBS Only

For technical support and original validation data for this product please contact:

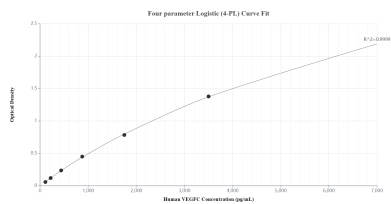
T: 4006900926

E: Proteintech-CN@ptglab.com

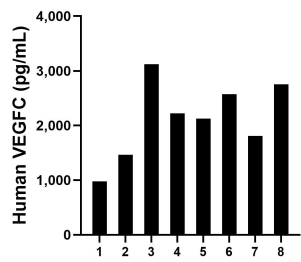
W: ptgcn.com

**This product is exclusively available under Proteintech Group brand and is not available to purchase from any other manufacturer.**

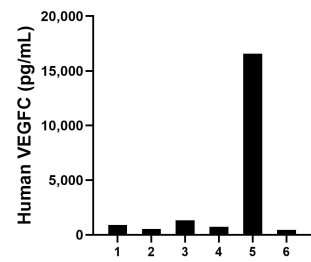
Selected Validation Data



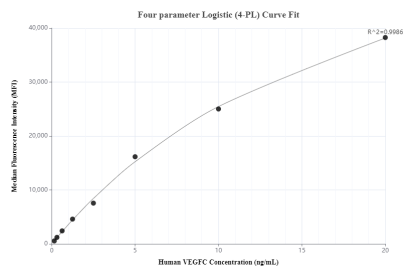
Sandwich ELISA standard curve of MP00710-3, Human VEGFC Recombinant Matched Antibody Pair - PBS only. 83727-3-PBS was coated to a plate as the capture antibody and incubated with serial dilutions of standard Eg32025. 83727-4-PBS was HRP conjugated as the detection antibody. Range: 109.4-7000 pg/mL



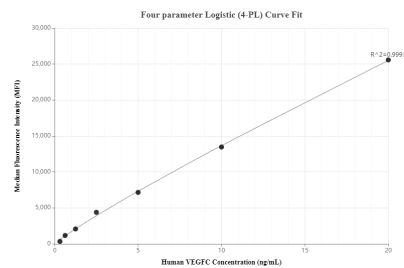
Saliva of eight individual healthy human donors was measured. The VEGFC concentration of detected samples was determined to be 2,130.9 pg/mL with a range of 977.3 - 3,119.4 pg/mL



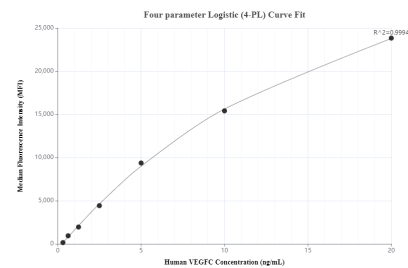
Serum of six individual healthy human donors was measured. The VEGFC concentration of detected samples was determined to be 3,419.6 pg/mL with a range of 440.5 - 16,575.6 pg/mL



Cytometric bead array standard curve of MP00710-1, VEGF-C Recombinant Matched Antibody Pair, PBS Only. Capture antibody: 83727-2-PBS. Detection antibody: 83727-3-PBS. Standard: Eg32025. Range: 0.156-20 ng/mL



Cytometric bead array standard curve of MP00710-2, VEGF-C Recombinant Matched Antibody Pair, PBS Only. Capture antibody: 83727-3-PBS. Detection antibody: 83727-1-PBS. Standard: Eg32025. Range: 0.313-20 ng/mL



Cytometric bead array standard curve of MP00710-3, VEGF-C Recombinant Matched Antibody Pair, PBS Only. Capture antibody: 83727-3-PBS. Detection antibody: 83727-4-PBS. Standard: Eg32025. Range: 0.313-20 ng/mL