

For Research Use Only

# Mouse E-selectin Recombinant antibody, PBS Only (Capture)

Catalog Number: 83720-4-PBS



## Basic Information

Catalog Number:

83720-4-PBS

Size:

1 mg/ml

Source:

Rabbit

Isotype:

IgG

GenBank Accession Number:

NM\_011345.2

GeneID (NCBI):

20339

UNIPROT ID:

Q00690

Full Name:

selectin, endothelial cell

Calculated MW:

67KD

Purification Method:

Protein A purification

CloneNo.:

240700G8

## Applications

Tested Applications:

Cytometric bead array, Sandwich ELISA, Indirect ELISA, Sample test

Species Specificity:

mouse

## Background Information

### Storage

Storage:

Store at -80°C.

**The product is shipped with ice packs. Upon receipt, store it immediately at -80°C**

Storage Buffer:

PBS Only

For technical support and original validation data for this product please contact:

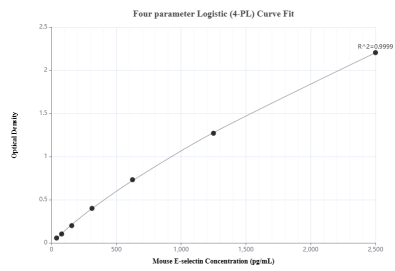
T: 4006900926

E: [Proteintech-CN@ptglab.com](mailto:Proteintech-CN@ptglab.com)

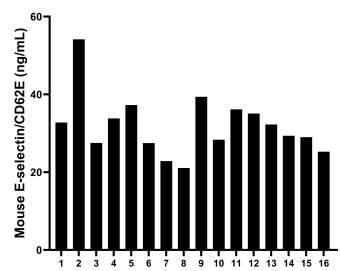
W: [ptgcn.com](http://ptgcn.com)

**This product is exclusively available under Proteintech Group brand and is not available to purchase from any other manufacturer.**

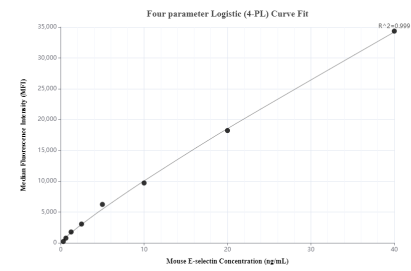
Selected Validation Data



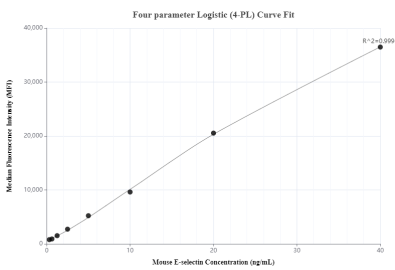
Sandwich ELISA standard curve of MP00720-3, Mouse E-selectin / CD62E Recombinant Matched Antibody Pair - PBS only. 83720-4-PBS was coated to a plate as the capture antibody and incubated with serial dilutions of standard Eg0610. 83720-1-PBS was HRP conjugated as the detection antibody. Range: 39.1-2500 pg/mL



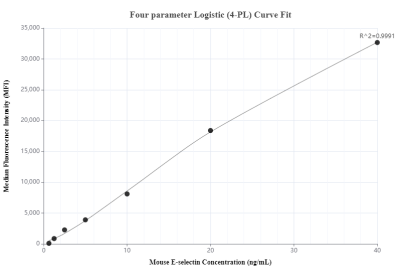
Serum of sixteen mice was measured. The E-selectin concentration of detected samples was determined to be 32.0 ng/mL with a range of 21.1 - 54.1 ng/mL.



Cytometric bead array standard curve of MP00720-1, MOUSE E-selectin/CD62E Recombinant Matched Antibody Pair, PBS Only. Capture antibody: 83720-4-PBS. Detection antibody: 83720-3-PBS. Standard: Eg0610. Range: 0.313-40 ng/mL



Cytometric bead array standard curve of MP00720-2, MOUSE E-selectin/CD62E Recombinant Matched Antibody Pair, PBS Only. Capture antibody: 83720-4-PBS. Detection antibody: 83720-2-PBS. Standard: Eg0610. Range: 0.313-40 ng/mL



Cytometric bead array standard curve of MP00720-3, MOUSE E-selectin/CD62E Recombinant Matched Antibody Pair, PBS Only. Capture antibody: 83720-4-PBS. Detection antibody: 83720-1-PBS. Standard: Eg0610. Range: 0.625-40 ng/mL