

For Research Use Only

CSPG4 Recombinant antibody, PBS Only (Detector)

Catalog Number: 83716-2-PBS



Basic Information

Catalog Number:

83716-2-PBS

Size:

1 mg/ml

Source:

Rabbit

Isotype:

IgG

GenBank Accession Number:

NM_001897.5

GeneID (NCBI):

1464

UNIPROT ID:

Q6UVK1

Full Name:

chondroitin sulfate proteoglycan 4

Calculated MW:

251kd

Purification Method:

Protein A purification

CloneNo.:

240733F12

Applications

Tested Applications:

Cytometric bead array, Sandwich ELISA, Indirect ELISA,
Sample test

Species Specificity:

human

Background Information

Storage

Storage:

Store at -80°C.

The product is shipped with ice packs. Upon receipt, store it immediately at -80°C

Storage Buffer:

PBS Only

For technical support and original validation data for this product please contact:

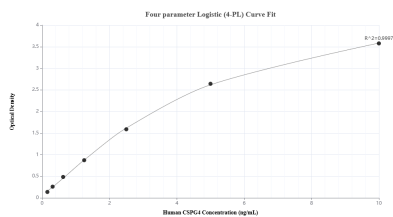
T: 4006900926

E: Proteintech-CN@ptglab.com

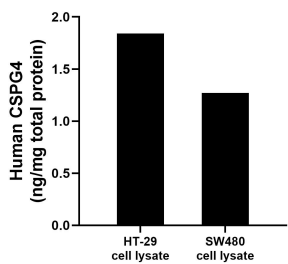
W: ptgcn.com

This product is exclusively available under Proteintech Group brand and is not available to purchase from any other manufacturer.

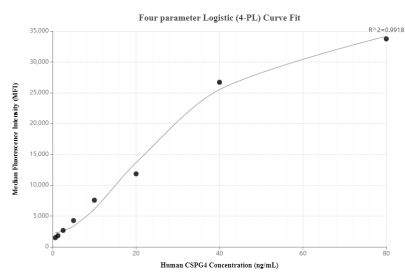
Selected Validation Data



Sandwich ELISA standard curve of MP00694-3, Human CSPG4 Recombinant Matched Antibody Pair - PBS only. 83716-5-PBS was coated to a plate as the capture antibody and incubated with serial dilutions of standard Eg0201. 83716-2-PBS was HRP conjugated as the detection antibody. Range: 0.156-10 ng/mL



HT-29 cell lysate and SW480 cell lysate were measured. The human CSPG4 concentration was determined to be 1.84 ng/mg total protein in HT-29 cell lysate and 1.27 ng/mg total protein in SW480 cell lysate.



Cytometric bead array standard curve of MP00694-1, CSPG4 Recombinant Matched Antibody Pair, PBS Only. Capture antibody: 83716-1-PBS. Detection antibody: 83716-2-PBS. Standard: Eg0201. Range: 0.625-80 ng/mL