

For Research Use Only

CSPG4 Recombinant antibody, PBS Only (Capture)



Catalog Number: 83716-1-PBS

Basic Information

Catalog Number: 83716-1-PBS	GenBank Accession Number: NM_001897.5	Purification Method: Protein A purification
Size: 1 mg/ml	GeneID (NCBI): 1464	CloneNo.: 240733C9
Source: Rabbit	UNIPROT ID: Q6UVK1	
Isotype: IgG	Full Name: chondroitin sulfate proteoglycan 4	
	Calculated MW: 251kd	

Applications

Tested Applications:
WB, Cytometric bead array, Indirect ELISA

Species Specificity:
human

Background Information

Storage

Storage:
Store at -80°C.
The product is shipped with ice packs. Upon receipt, store it immediately at -80°C

Storage Buffer:
PBS Only

For technical support and original validation data for this product please contact:

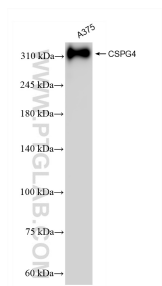
T: 4006900926

E: Proteintech-CN@ptglab.com

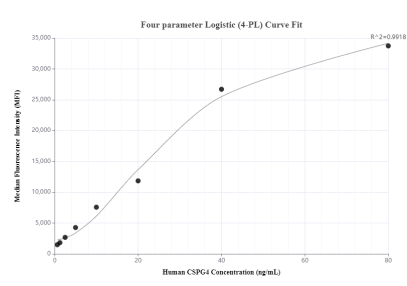
W: ptgcn.com

This product is exclusively available under Proteintech Group brand and is not available to purchase from any other manufacturer.

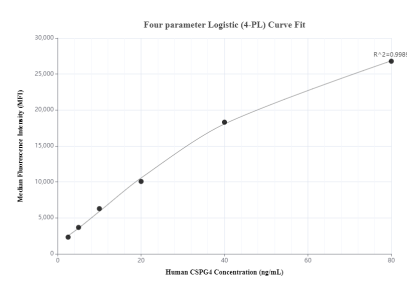
Selected Validation Data



A375 cells were subjected to SDS PAGE followed by western blot with 83716-1-RR (CSPG4 antibody) at dilution of 1:5000 incubated at room temperature for 1.5 hours. This data was developed using the same antibody clone with 83716-1-PBS in a different storage buffer formulation.



Cytometric bead array standard curve of MP00694-1, CSPG4 Recombinant Matched Antibody Pair, PBS Only. Capture antibody: 83716-1-PBS. Detection antibody: 83716-2-PBS. Standard: Eg0201. Range: 0.625-80 ng/mL.



Cytometric bead array standard curve of MP00694-2, CSPG4 Recombinant Matched Antibody Pair, PBS Only. Capture antibody: 83716-1-PBS. Detection antibody: 83716-3-PBS. Standard: Eg0201. Range: 2.5-80 ng/mL.