

For Research Use Only

# Bif-1 Recombinant antibody, PBS Only (Capture)

Catalog Number: 83715-1-PBS



## Basic Information

Catalog Number:	83715-1-PBS	GenBank Accession Number:	BC007455	Purification Method:	Protein A purification
Size:	1 mg/ml	GeneID (NCBI):	51100	CloneNo.:	240623E1
Source:	Rabbit	UNIPROT ID:	Q9Y371		
Isotype:	IgG	Full Name:	SH3-domain GRB2-like endophilin B1		
Immunogen Catalog Number:	AG7710	Calculated MW:	41 kDa		
		Observed MW:	41 kDa		

## Applications

**Tested Applications:**  
WB, IF/ICC, Cytometric bead array, Indirect ELISA

**Species Specificity:**  
human

## Background Information

SH3GLB1 also known as Bif-1, contains an N-terminal domain, a central coiled-coil region, and a C-terminal SH3 domain, but shares no significant homology with members of the Bcl-2 family. SH3GLB1 is involved in activation of caspase-dependent apoptosis by promoting BAX/BAK1 activation (PubMed:16227588).

## Storage

**Storage:**  
Store at -80°C.  
**The product is shipped with ice packs. Upon receipt, store it immediately at -80°C**

**Storage Buffer:**  
PBS Only

For technical support and original validation data for this product please contact:

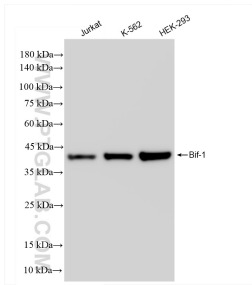
T: 4006900926

E: Proteintech-CN@ptglab.com

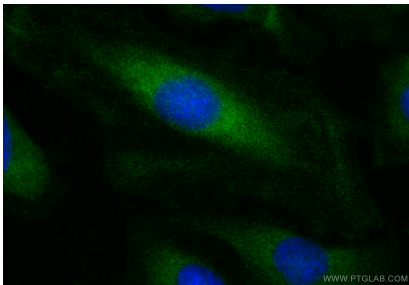
W: ptgcn.com

This product is exclusively available under Proteintech Group brand and is not available to purchase from any other manufacturer.

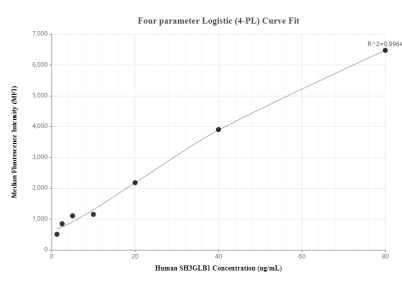
Selected Validation Data



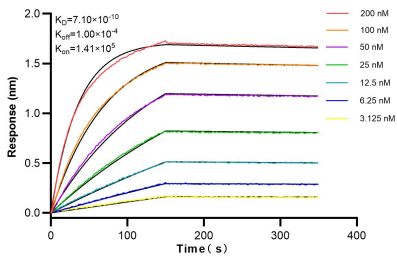
Various lysates were subjected to SDS PAGE followed by western blot with 83715-1-RR (Bif-1 antibody) at dilution of 1:10000 incubated at room temperature for 1.5 hours. This data was developed using the same antibody clone with 83715-1-PBS in a different storage buffer formulation.



Immunofluorescent analysis of (-20°C Ethanol) fixed HeLa cells using Bif-1 antibody (83715-1-RR, Clone: 240623E1 ) at dilution of 1:1000 and CoraLite®488-Conjugated Goat Anti-Rabbit IgG(H+L) (SA00013-2). This data was developed using the same antibody clone with 83715-1-PBS in a different storage buffer formulation.



Cytometric bead array standard curve of MP00691-2, SH3GLB1 Recombinant Matched Antibody Pair, PBS Only. Capture antibody: 83715-1-PBS. Detection antibody: 83715-3-PBS. Standard: Ag7710. Range: 1.25-80 ng/mL.



Biolayer interferometry (BLI) kinetic assays of 83715-1-RR against Human Bif-1 were performed. The affinity constant is 0.71 nM.