

For Research Use Only

RAE1 Recombinant antibody, PBS Only (Capture/Detector)

Catalog Number: 83712-3-PBS



Basic Information

Catalog Number:

83712-3-PBS

Concentration:

1 mg/ml

Source:

Rabbit

Isotype:

IgG

Immunogen Catalog Number:

AG12102

GenBank Accession Number:

BC103754

GeneID (NCBI):

8480

UNIPROT ID:

P78406

Full Name:

RAE1 RNA export 1 homolog (S.
pombe)

Calculated MW:

368 aa, 41 kDa

Purification Method:

Protein A purification

CloneNo.:

240861H8

Applications

Tested Applications:

Cytometric bead array, Sandwich ELISA, Indirect ELISA,
Sample test

Species Specificity:

human

Background Information

Storage

Storage:

Store at -80°C.

The product is shipped with ice packs. Upon receipt, store it immediately at -80°C

Storage Buffer:

PBS Only

For technical support and original validation data for this product please contact:

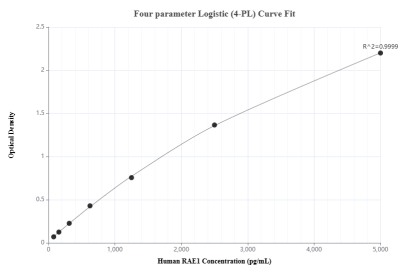
T: 4006900926

E: Proteintech-CN@ptglab.com

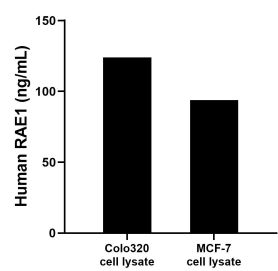
W: ptgcn.com

This product is exclusively available under Proteintech Group brand and is not available to purchase from any other manufacturer.

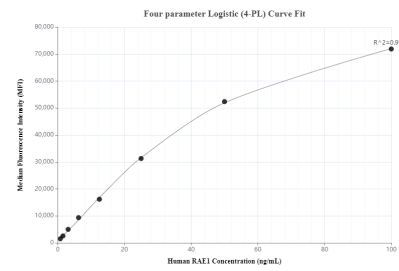
Selected Validation Data



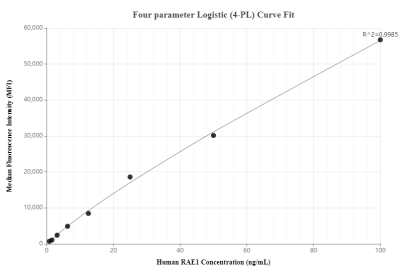
Sandwich ELISA standard curve of MP00683-4, Human RAE1 Recombinant Matched Antibody Pair - PBS only. 83712-5-PBS was coated to a plate as the capture antibody and incubated with serial dilutions of standard Ag12102. 83712-3-PBS was HRP conjugated as the detection antibody. Range: 78.1-5000 pg/mL



Colo320 and MCF-7 cell lysates were measured. The human RAE1 concentration of detected samples was determined to be 123.92 ng/mL (based on a 2.00 mg/mL extract load) in Colo320 cell lysate and 93.86 ng/mL (based on a 1.20 mg/mL extract load) in MCF-7 cell lysate.



Cytometric bead array standard curve of MP00683-1, RAE1 Recombinant Matched Antibody Pair, PBS Only. Capture antibody: 83712-3-PBS. Detection antibody: 83712-1-PBS. Standard: Ag12102. Range: 0.781-100 ng/mL



Cytometric bead array standard curve of MP00683-2, RAE1 Recombinant Matched Antibody Pair, PBS Only. Capture antibody: 83712-3-PBS. Detection antibody: 83712-2-PBS. Standard: Ag12102. Range: 0.781-100 ng/mL