

For Research Use Only

# RAE1 Recombinant monoclonal antibody, PBS Only

Catalog Number: 83712-1-PBS



## Basic Information

Catalog Number:

83712-1-PBS

Source:

Rabbit

Isotype:

IgG

Immunogen Catalog Number:

AG12102

GenBank Accession Number:

BC103754

GeneID (NCBI):

8480

UNIPROT ID:

P78406

Full Name:

RAE1 RNA export 1 homolog (S. pombe)

Calculated MW:

368 aa, 41 kDa

Observed MW:

41 kDa

Purification Method:

Protein A purification

CloneNo.:

240861E12

## Applications

Tested Applications:

WB, FC (Intra), Indirect ELISA

Species Specificity:

human, mouse

## Background Information

RAE1 acts as a mRNA export factor involved in nucleocytoplasmic transport, it plays a role in mitotic bipolar spindle formation. (PMID: 33849972, MID: 17172455)

## Storage

Storage:

Store at -80°C.

**The product is shipped with ice packs. Upon receipt, store it immediately at -80°C**

Storage Buffer:

PBS only, pH7.3

For technical support and original validation data for this product please contact:

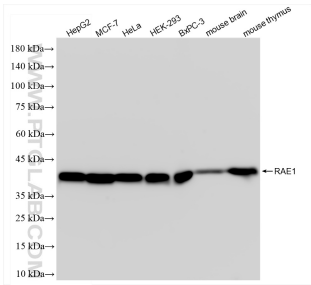
T: 4006900926

E: [Proteintech-CN@ptglab.com](mailto:Proteintech-CN@ptglab.com)

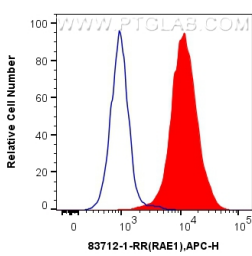
W: [ptgcn.com](http://ptgcn.com)

**This product is exclusively available under Proteintech Group brand and is not available to purchase from any other manufacturer.**

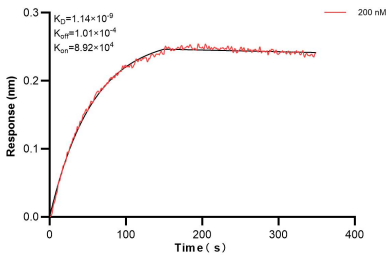
Selected Validation Data



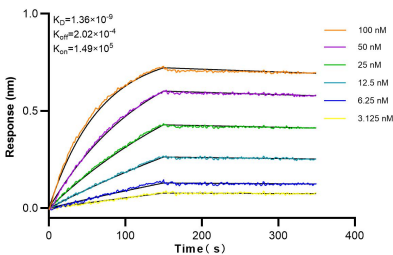
Various lysates were subjected to SDS PAGE followed by western blot with 83712-1-RR (RAE1 antibody) at dilution of 1:10000 incubated at room temperature for 1.5 hours. This data was developed using the same antibody clone with 83712-1-PBS in a different storage buffer formulation.



1x10<sup>6</sup> HepG2 cells were intracellularly stained with 0.25 ug RAE1 Recombinant antibody (83712-1-RR, Clone:240861E12) and APC-Conjugated AffiniPure Goat Anti-Rabbit IgG(H+L)(red), or 0.25 ug Isotype Control (blue). Cells were fixed with 4% PFA and permeabilized with Flow Cytometry Perm Buffer. This data was developed using the same antibody clone with 83712-1-PBS in a different storage buffer formulation.



Biolayer interferometry (BLI) kinetic assay of 83712-1-PBS against Human RAE1 was performed. The affinity constant is 1.14 nM.



Biolayer interferometry (BLI) kinetic assays of 83712-1-RR against Human RAE1 were performed. The affinity constant is 1.36 nM.