

For Research Use Only

# Mouse C-Reactive Protein/CRP Recombinant antibody, PBS Only (Capture)

Catalog Number: 83711-1-PBS



## Basic Information

Catalog Number:

83711-1-PBS

Concentration:

1 mg/ml

Source:

Rabbit

Isotype:

IgG

GenBank Accession Number:

NM\_007768

GeneID (NCBI):

12944

UNIPROT ID:

P14847

Full Name:

C-reactive protein, pentraxin-related

Observed MW:

25-28 kDa

Purification Method:

Protein A purification

CloneNo.:

240369B10

## Applications

Tested Applications:

WB, Sandwich ELISA, Indirect ELISA, Sample test

Species Specificity:

mouse

## Background Information

C-reactive protein (CRP) is an acute-phase serum protein synthesized by the liver in response to interleukin-6 (IL-6) during inflammation. The name CRP derives from its ability to react with the C polysaccharide of *Streptococcus pneumoniae*. CRP is an annular, pentameric protein belonging to the pentraxin family. CRP displays several functions associated with host defense: it promotes agglutination, bacterial capsular swelling, phagocytosis, and complement fixation through its calcium-dependent binding to phosphorylcholine. It is used mainly as a marker of inflammation. This antibody is specific for mouse Crp.

## Storage

Storage:

Store at -80°C.

The product is shipped with ice packs. Upon receipt, store it immediately at -80°C

Storage Buffer:

PBS Only

For technical support and original validation data for this product please contact:

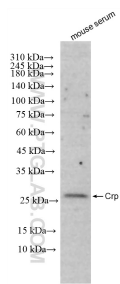
T: 4006900926

E: [Proteintech-CN@ptglab.com](mailto:Proteintech-CN@ptglab.com)

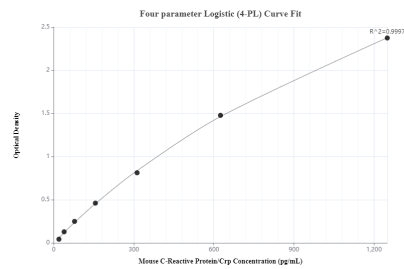
W: [ptgcn.com](http://ptgcn.com)

This product is exclusively available under Proteintech Group brand and is not available to purchase from any other manufacturer.

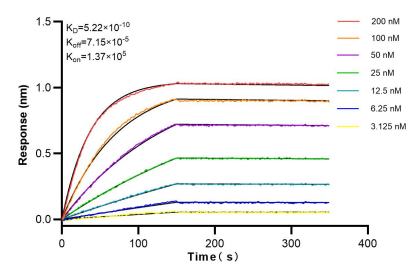
## Selected Validation Data



mouse serum were subjected to SDS PAGE followed by western blot with 83711-1-RR (C-Reactive Protein/CRP antibody) at dilution of 1:10000 incubated at room temperature for 1.5 hours. This data was developed using the same antibody clone with 83711-1-PBS in a different storage buffer formulation.



Sandwich ELISA standard curve of MP00815-1, mouse Crp Recombinant Matched Antibody Pair - PBS only. 83711-1-PBS was coated to a plate as the capture antibody and incubated with serial dilutions of standard Eg0756. 83711-2-PBS was HRP conjugated as the detection antibody. Range: 19.53-1250 pg/mL



Biolayer interferometry (BLI) kinetic assays of 83711-1-RR against Mouse Crp were performed. The affinity constant is 0.522 nM.