

For Research Use Only

# FGFR3 Recombinant antibody, PBS Only (Detector)

Catalog Number: 83701-1-PBS



## Basic Information

Catalog Number:

83701-1-PBS

Size:

1 mg/ml

Source:

Rabbit

Isotype:

IgG

GenBank Accession Number:

NM\_001163213.1

GeneID (NCBI):

2261

UNIPROT ID:

P22607-2

Full Name:

fibroblast growth factor receptor 3

Calculated MW:

88kd

Purification Method:

Protein A purification

CloneNo.:

240758B1

## Applications

Tested Applications:

Cytometric bead array, Sandwich ELISA, Indirect ELISA,  
Sample test

Species Specificity:

human

## Background Information

### Storage

Storage:

Store at -80°C.

**The product is shipped with ice packs. Upon receipt, store it immediately at -80°C**

Storage Buffer:

PBS Only

For technical support and original validation data for this product please contact:

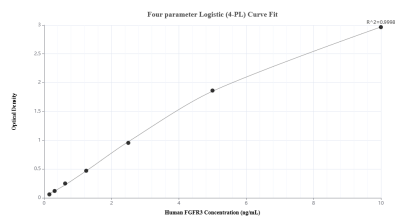
T: 4006900926

E: [Proteintech-CN@ptglab.com](mailto:Proteintech-CN@ptglab.com)

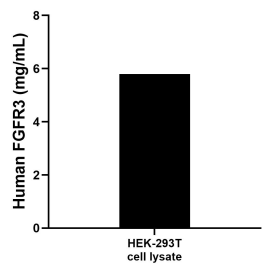
W: [ptgcn.com](http://ptgcn.com)

**This product is exclusively available under Proteintech Group brand and is not available to purchase from any other manufacturer.**

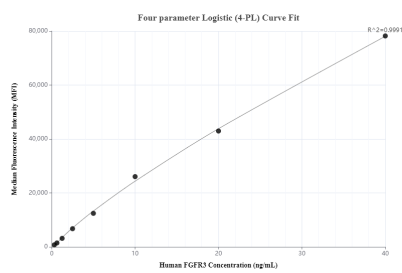
## Selected Validation Data



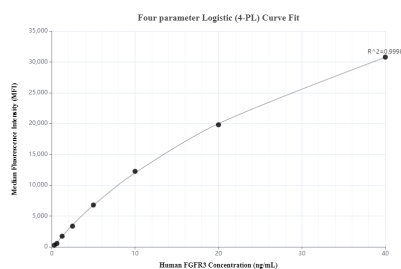
Sandwich ELISA standard curve of MP00407-4, Human FGFR3 Recombinant Matched Antibody Pair - PBS only. 83701-3-PBS was coated to a plate as the capture antibody and incubated with serial dilutions of standard Eg1041. 83701-1-PBS was HRP conjugated as the detection antibody. Range: 0.16-10 ng/mL



HEK-293T cell lysate was measured. The human FGFR3 concentration was determined to be 5.8 mg/mL in HEK-293T cell lysate.



Cytometric bead array standard curve of MP00407-2, FGFR3 Recombinant Matched Antibody Pair, PBS Only. Capture antibody: 83701-2-PBS. Detection antibody: 83701-1-PBS. Standard: Eg1041. Range: 0.313-40 ng/mL



Cytometric bead array standard curve of MP00407-4, FGFR3 Recombinant Matched Antibody Pair, PBS Only. Capture antibody: 83701-3-PBS. Detection antibody: 83701-1-PBS. Standard: Eg1041. Range: 0.313-40 ng/mL