

For Research Use Only

Rat Albumin Recombinant antibody, PBS Only (Capture/Detector)

Catalog Number: 83697-3-PBS



Basic Information

Catalog Number:

83697-3-PBS

Concentration:

1 mg/ml

Source:

Rabbit

Isotype:

IgG

Immunogen Catalog Number:

EG0935

GenBank Accession Number:

GeneID (NCBI):

24186

UNIPROT ID:

P02770

Full Name:

albumin

Calculated MW:

69 kDa

Purification Method:

Protein A purification

CloneNo.:

240745A5

Applications

Tested Applications:

Cytometric bead array, Sandwich ELISA, Indirect ELISA,
Sample test

Species Specificity:

rat

Background Information

Storage

Storage:

Store at -80°C.

The product is shipped with ice packs. Upon receipt, store it immediately at -80°C

Storage Buffer:

PBS only, pH7.3

For technical support and original validation data for this product please contact:

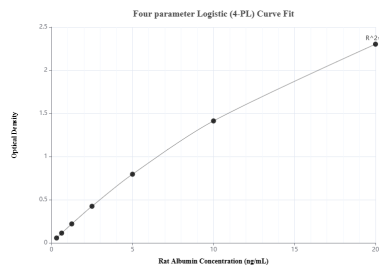
T: 4006900926

E: Proteintech-CN@ptglab.com

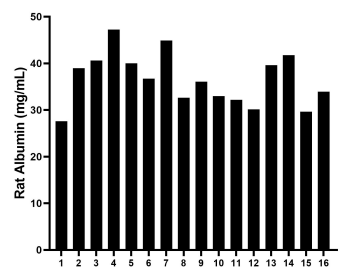
W: ptgcn.com

This product is exclusively available under Proteintech Group brand and is not available to purchase from any other manufacturer.

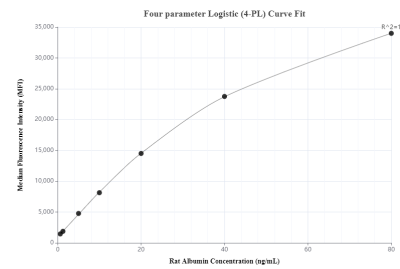
Selected Validation Data



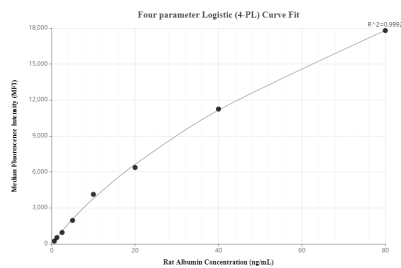
Sandwich ELISA standard curve of MP00652-4, Rat Albumin Recombinant Matched Antibody Pair - PBS only. 83697-3-PBS was coated to a plate as the capture antibody and incubated with serial dilutions of standard Eg0935. 83697-4-PBS was HRP conjugated as the detection antibody. Range: 0.31-20 ng/mL



Serum of sixteen rats was measured. The Albumin concentration of detected samples was determined to be 36.6 mg/mL with a range of 27.6 - 47.2 mg/mL



Cytometric bead array standard curve of MP00652-2, RAT Albumin Recombinant Matched Antibody Pair, PBS Only. Capture antibody: 83697-2-PBS. Detection antibody: 83697-3-PBS. Standard: Eg0935. Range: 0.625-80 ng/mL



Cytometric bead array standard curve of MP00652-3, RAT Albumin Recombinant Matched Antibody Pair, PBS Only. Capture antibody: 83697-1-PBS. Detection antibody: 83697-3-PBS. Standard: Eg0935. Range: 0.625-80 ng/mL