

For Research Use Only

Rat ICAM-1/CD54 Recombinant antibody, PBS Only (Detector)

Catalog Number: 83696-2-PBS



Basic Information

Catalog Number:

83696-2-PBS

Size:

1 mg/ml

Source:

Rabbit

Isotype:

IgG

GenBank Accession Number:

NM_012967.1

GeneID (NCBI):

25464

UNIPROT ID:

Q00238

Full Name:

intercellular adhesion molecule 1

Calculated MW:

60 kDa

Purification Method:

Protein A purification

CloneNo.:

240725D10

Applications

Tested Applications:

Cytometric bead array, Sandwich ELISA, Indirect ELISA,
Sample test

Species Specificity:

rat

Background Information

Storage

Storage:

Store at -80°C.

The product is shipped with ice packs. Upon receipt, store it immediately at -80°C

Storage Buffer:

PBS Only

For technical support and original validation data for this product please contact:

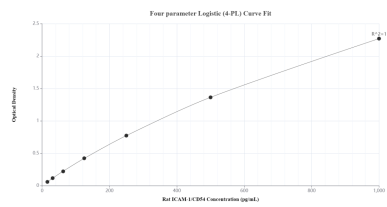
T: 4006900926

E: Proteintech-CN@ptglab.com

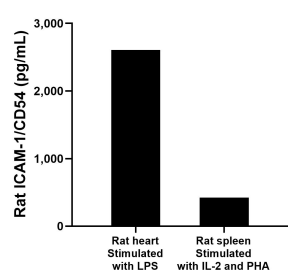
W: ptgcn.com

This product is exclusively available under Proteintech Group brand and is not available to purchase from any other manufacturer.

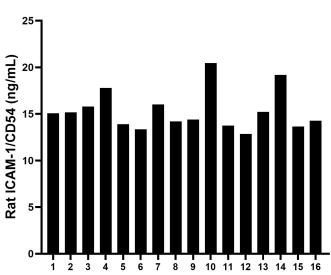
Selected Validation Data



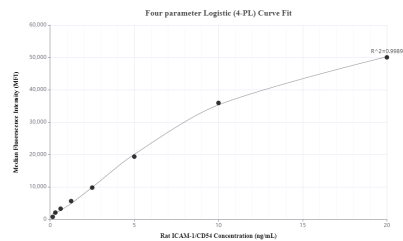
Sandwich ELISA standard curve of MP00678-2, Rat ICAM-1/CD54 Recombinant Matched Antibody Pair - PBS only. 83696-4-PBS was coated to a plate as the capture antibody and incubated with serial dilutions of standard Eg1025. 83696-2-PBS was HRP conjugated as the detection antibody. Range: 15.6-1000 pg/mL



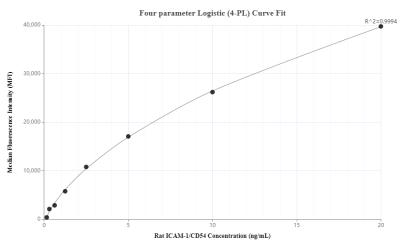
Rat heart conditioned media (1 heart, 1-2 mm pieces) was cultured for 4 days in 30 mL of RPMI supplemented with 10% fetal bovine serum and stimulated with 2.5 ng/mL LPS. The mean ICAM-1/CD54 concentration was determined to be 2,606.5 pg/mL in stimulated heart supernatant. Spleens from rats were removed, rinsed in PBS, and kept on ice. The tissue was homogenized using a tissue homogenizer and seeded into media containing DMEM



Serum of sixteen rats was measured. The ICAM-1/CD54 concentration of detected samples was determined to be 15.3 ng/mL with a range of 12.9 - 20.5 ng/mL



Cytometric bead array standard curve of MP00678-2, RAT ICAM-1/CD54 Recombinant Matched Antibody Pair, PBS Only. Capture antibody: 83696-4-PBS. Detection antibody: 83696-2-PBS. Standard: Eg1025. Range: 0.156-20 ng/mL



Cytometric bead array standard curve of MP00678-3, RAT ICAM-1/CD54 Recombinant Matched Antibody Pair, PBS Only. Capture antibody: 83696-3-PBS. Detection antibody: 83696-2-PBS. Standard: Eg1025. Range: 0.156-20 ng/mL