

For Research Use Only

ASGR1 Recombinant antibody, PBS Only (Capture/Detector)

Catalog Number: 83691-1-PBS



Basic Information

Catalog Number:

83691-1-PBS

Size:

1 mg/ml

Source:

Rabbit

Isotype:

IgG

GenBank Accession Number:

NM_001671.4

GeneID (NCBI):

432

UNIPROT ID:

P07306-1

Full Name:

asialoglycoprotein receptor 1

Calculated MW:

33 kDa

Purification Method:

Protein A purification

CloneNo.:

240672A3

Applications

Tested Applications:

Cytometric bead array, Sandwich ELISA, Indirect ELISA,
Sample test

Species Specificity:

human

Background Information

Storage

Storage:

Store at -80°C.

The product is shipped with ice packs. Upon receipt, store it immediately at -80°C

Storage Buffer:

PBS Only

For technical support and original validation data for this product please contact:

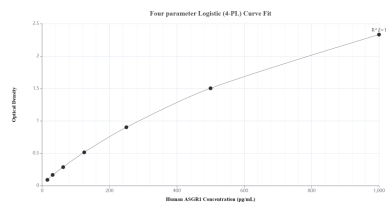
T: 4006900926

E: Proteintech-CN@ptglab.com

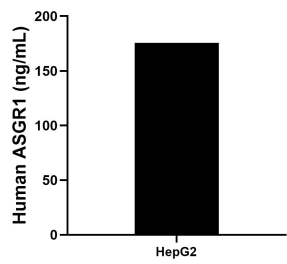
W: ptgcn.com

This product is exclusively available under Proteintech Group brand and is not available to purchase from any other manufacturer.

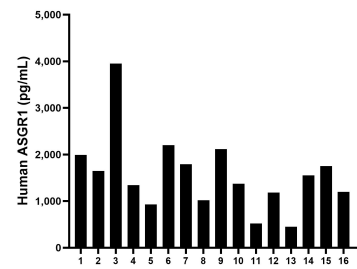
Selected Validation Data



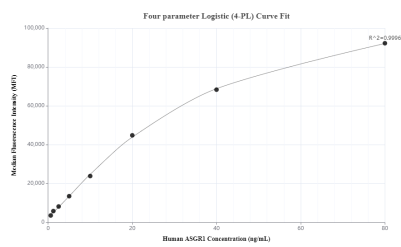
Sandwich ELISA standard curve of MP00681-3, Human ASGR1 Recombinant Matched Antibody Pair - PBS only. 83691-1-PBS was coated to a plate as the capture antibody and incubated with serial dilutions of standard Eg0946. 83691-3-PBS was HRP conjugated as the detection antibody. Range: 7.8-1000 pg/mL.



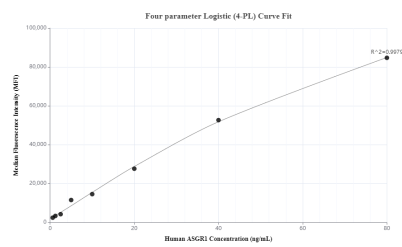
The mean human ASGR1 concentration was determined to be 175.6 ng/mL in HepG2 cell extract based on a 3.7 mg/mL extract load.



Serum of sixteen individual healthy human donors was measured. The ASGR1 concentration of detected samples was determined to be 1,563.4 pg/mL with a range of 450.5-3,950.7 pg/mL.



Cytometric bead array standard curve of MP00681-2, ASGR1 Recombinant Matched Antibody Pair, PBS Only. Capture antibody: 83691-2-PBS. Detection antibody: 83691-1-PBS. Standard: Eg0946. Range: 0.625-80 ng/mL.



Cytometric bead array standard curve of MP00681-3, ASGR1 Recombinant Matched Antibody Pair, PBS Only. Capture antibody: 83691-1-PBS. Detection antibody: 83691-3-PBS. Standard: Eg0946. Range: 0.625-80 ng/mL.