

For Research Use Only

CD126/IL-6R alpha Recombinant antibody, PBS Only (Detector)

Catalog Number: 83688-2-PBS



Basic Information

Catalog Number:

83688-2-PBS

Size:

1 mg/ml

Source:

Rabbit

Isotype:

IgG

GenBank Accession Number:

BC132684

GeneID (NCBI):

3570

UNIPROT ID:

P08887

Full Name:

interleukin 6 receptor

Calculated MW:

468 aa, 52 kDa

Purification Method:

Protein A purification

CloneNo.:

24073486

Applications

Tested Applications:

Cytometric bead array, Sandwich ELISA, Indirect ELISA, Sample test

Species Specificity:

human

Background Information

Storage

Storage:

Store at -80°C.

The product is shipped with ice packs. Upon receipt, store it immediately at -80°C

Storage Buffer:

PBS Only

For technical support and original validation data for this product please contact:

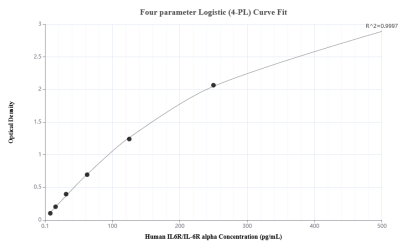
T: 4006900926

E: Proteintech-CN@ptglab.com

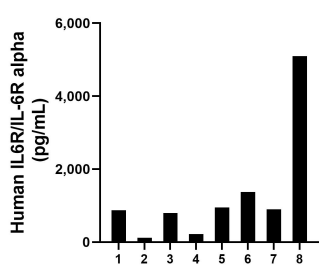
W: ptgcn.com

This product is exclusively available under Proteintech Group brand and is not available to purchase from any other manufacturer.

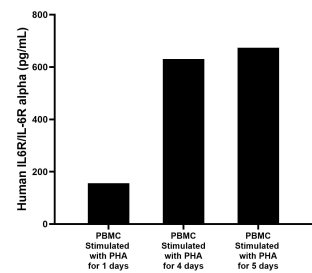
Selected Validation Data



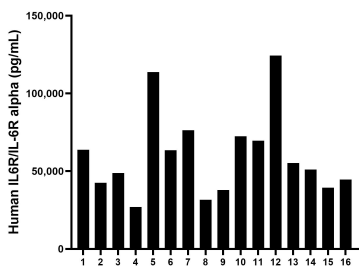
Sandwich ELISA standard curve of MP00676-1, Human IL6R/IL-6R alpha Recombinant Matched Antibody Pair - PBS only. 83688-3-PBS was coated to a plate as the capture antibody and incubated with serial dilutions of standard Eg0490. 83688-2-PBS was HRP conjugated as the detection antibody. Range: 7.8-500 pg/mL



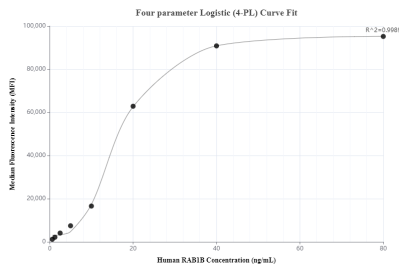
Urine of eight humans was measured. The human IL6R/IL-6R alpha concentration of these samples was determined to be 1,291.5 pg/mL, with a range of 119.4 - 5,099.9 pg/mL.



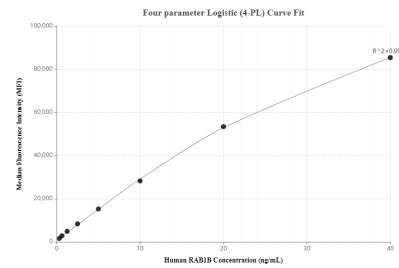
Human peripheral blood mononuclear cells (PBMC) (1×10^6 cells/mL) were cultured in DMEM supplemented with 8% fetal bovine serum, 5 μ M β -mercaptoethanol, 2 mM L-glutamine, 100 U/mL penicillin, and 100 μ g/mL streptomycin sulfate. Cells were cultured unstimulated or stimulated with 10 μ g/mL PHA for 1 day, 4 days and 5 days. Aliquots of the cell culture supernates were removed and assayed for levels of human IL6.



Serum of sixteen humans was measured. The human IL6R/IL-6R alpha concentration of these samples was determined to be 60,089 pg/mL, with a range of 37,850.6 - 124,335.2 pg/mL.



Cytometric bead array standard curve of MP00676-1, CD126/IL-6R alpha Recombinant Matched Antibody Pair, PBS Only. Capture antibody: 83688-3-PBS. Detection antibody: 83688-2-PBS. Standard: Eg0490. Range: 0.625-80 ng/mL.



Cytometric bead array standard curve of MP00676-2, CD126/IL-6R alpha Recombinant Matched Antibody Pair, PBS Only. Capture antibody: 83688-1-PBS. Detection antibody: 83688-2-PBS. Standard: Eg0490. Range: 0.313-40 ng/mL.