

For Research Use Only

# Chitinase 3-like 1/CHI3L1 Recombinant monoclonal antibody, PBS Only (Capture)

Catalog Number: 83685-6-PBS



## Basic Information

Catalog Number: 83685-6-PBS	GenBank Accession Number: NM_001276.4	Purification Method: Protein A purification
Source: Rabbit	GeneID (NCBI): 1116	CloneNo.: 253193A1
Isotype: IgG	UNIPROT ID: P36222	
Immunogen Catalog Number: EG4992	Full Name: chitinase 3-like 1 (cartilage glycoprotein-39)	
	Calculated MW: 43 kDa	

## Applications

Tested Applications:  
Cytometric bead array, Indirect ELISA

Species Specificity:  
human

## Background Information

### Storage

Storage:  
Store at -80°C.  
**The product is shipped with ice packs. Upon receipt, store it immediately at -80°C**

Storage Buffer:  
PBS only, pH7.3

For technical support and original validation data for this product please contact:

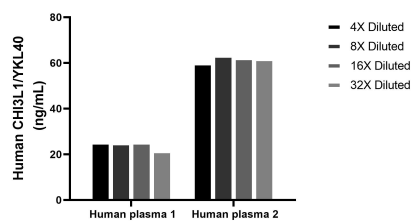
T: 4006900926

E: [Proteintech-CN@ptglab.com](mailto:Proteintech-CN@ptglab.com)

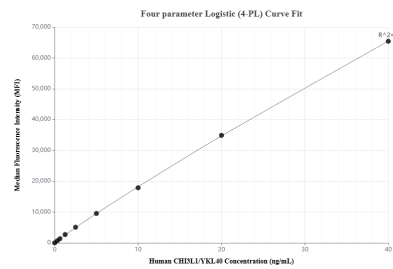
W: [ptgcn.com](http://ptgcn.com)

**This product is exclusively available under Proteintech Group brand and is not available to purchase from any other manufacturer.**

## Selected Validation Data



The mean CHI3L1/YKL40 concentration was determined to be 24.2 ng/mL in human plasma 1, 61.8 ng/mL in human plasma 2.



Cytometric bead array standard curve of MP00663-4, CHI3L1/YKL40 Recombinant Matched Antibody Pair, PBS Only. Capture antibody: 83685-6-PBS. Detection antibody: 83685-5-PBS. Standard: Eg4992. Range: 0.312-40 ng/mL.